



Collibra Data Governance Center
Platform Upgrade

Collibra Data Governance Center - Platform Upgrade

Release date: January 30, 2023

Revision date: Mon Jan 30, 2023

You can find the most up-to-date technical documentation on our Documentation Center at

https://productresources.collibra.com/docs/collibra/latest/Content/Installation/Upgrade/to_upgrade.htm

Contents

Contents	ii
Before the upgrade	i
Best practices	ii
Check the repository before an upgrade	ii
Repository statuses	iv
Upgrading to Collibra DGC 5.8.1	7
Install 5.8.1 over 5.6.5 or newer	9
Install 5.8.1 with an old 5.x backup	15
Upgrade from 5.5 or older to 5.6.5	17
Troubleshooting the upgrade	20
Installation log files	20
Diagnostic files	20
Upgrade fails on backup	23
Error "Version mismatch"	23
DGC does not start after an upgrade	24
API changes in 5.1 or newer	27
Deprecated API v1	28
API changes in 5.1 or newer	29
Infrastructural changes	29
Architectural changes	30
Functional changes	33
Java API changes	38
Java Model changes	64

Java DTO changes	90
Rest API changes	106
Rest Model changes	147
FAQ on-premises upgrade to 5.8	174
Why are we upgrading PostgreSQL?	174
Which on-premises Collibra DGC environments are impacted?	174
What is the timeline for the upgrade to PostgreSQL 11?	174
What is the impact on my on-premises Collibra DGC environment on November 10, 2022?	175
Can I migrate my on-premises environment to the cloud?	175
What is the feature compatibility between cloud and on-premises environments?	175
Can I restore backups from cloud environment in my on-premises environment?	176
Appendix A - Plain-text attributes	i

Before the upgrade

Warning If you are upgrading from Collibra DGC 5.5 or older and you have the GDPR Solution installed, you must carry out a [post-upgrade procedure](#), in order to access your upgraded Collibra DGC environment.

Note

- The upgrade to Collibra Data Governance Center 5.6 or newer requires the Search service.
- If you upgrade a 4.5.x/4.6.x environment to 5.8, there are certain [limitations](#).

Before you upgrade your Collibra Data Governance Center environment to 5.8.1, keep the following prerequisites in mind:

1. You have requested a 5.8.1 license from your Collibra Customer Success manager if you are upgrading from Collibra DGC 4.x .
You cannot start a 5.8 environment with a license file from a 4.x environment.
However, DGC 5.x licenses will still work on 5.8.
2. You have downloaded **upgrade_checkup_script.sql** from the [Collibra Downloads page](#), however not mandatory for the upgrade, we highly recommend to [execute this repository health-check](#).
3. You have created a backup of your environment.
 - **4.5.x** or **4.6.x**: See [Create a backup in Collibra DGC 4.x](#).
 - **5.x**: See [Create a backup](#).
4. You have **stopped** the complete environment if you **install** 5.8.1 over an existing 5.6.5 environment. Also ensure that you have **stopped** the agent and Collibra Console services.
5. The node on which you will install the Search service, must meet the [minimum system requirements](#).
For this service, we recommend to either use a new node or to add it to the node that hosts the Data Governance Center service.
We also recommend to look at the [recommended system requirements](#) and [supported operating systems](#).
6. On [Linux operating systems](#), you have to **install PostgreSQL 11** before starting the installation.

On [Windows Server operating systems](#), PostgreSQL 11 is packaged with the installer.

Best practices

Operating System upgrade

When upgrading the Operating System, keep the following in mind:

- Ensure that the used user account keeps full permissions on the Collibra DGC installation directories.
- Ensure that the SSO configuration does not change.
- Ensure that the SSL configuration does not change.

Restoring a backup

If you restore a backup from another environment, ensure that you clear the option **Configuration**. Including the configuration when restoring a backup overwrites your existing configuration and may leave your environment unresponsive.

Environment upgrade

When you upgrade your environment, ensure that you use the same user account that was used to install the environment.

Check the repository before an upgrade

If you upgrade from a version 5.7.6 or older to 5.7.7 or newer, we highly recommend to check the health of your repository. To do the health check, you can download a script. This script detects any possible issues that may block the upgrade of your environment.

The script does not change any data in the Repository and has minimal impact on the performance. There is no need to stop the environment.

Tip This procedure is not necessary if your current version is 5.7.7 or newer.

Steps

1. Download the script `upgrade_checkup_script.sql` from the [Collibra Downloads page](#).
2. Sign in to the server that hosts the Repository service.
3. Save the script in a temporary directory, for example `/tmp`.
4. From the temporary directory, run the following command:
 - Linux:

```
#set environment variable
export PGPASSFILE={path_to_collibra_data_dir}/re-
po/data/.pgpass;

#execute script
{path_to_repo_installation_dir}/pgsql/bin/psql -p 4403
-U collibra -d dgc -q -f upgrade_checkup_script.sql >>
checkup_result.txt
```

Example

```
export PGPASSFILE=/collibra_
data/repo/data/.pgpass; collibra/pgsql/bin/psql -
p 4403 -U collibra -d dgc -q -f upgrade_checkup_
script.sql >> checkup_result.txt
```

- Windows Powershell:

```
#set environment variable
env:PGPASSFILE="{path_to_collibra_data_dir}/re-
po/data/pgpass.conf;

#execute script
{path_to_repo_installation_dir}/pgsql/bin/psql -p 4403
-U collibra -d dgc -q -f upgrade_checkup_script.sql >>
checkup_result.txt
```

- Windows command prompt:

```
#set environment variable
SET PGPASSFILE={path_to_collibra_data_dir}/re-
po/data/pgpass.conf;

#execute script
{path_to_repo_installation_dir}/pgsql/bin/psql -p 4403
-U collibra -d dgc -q -f upgrade_checkup_script.sql >>
checkup_result.txt
```

What's next?

The file **checkup_result.txt** is created in your temporary directory. You can open the file in a text editor.

At the end of the file, you can find the **status** of the checkup.

Repository statuses

When you have **checked** the repository, the results file (**checkup_result.txt**) contains the status of your repository.

Status	Description
GREEN	The health-check only contains warnings. The repository is safe to be upgraded.
ORANGE	There is information about history tables from a 4.x version but there are no errors found. The repository is safe to be upgraded.
RED	There are repository issues found that need to be resolved before you start the upgrade. Do not start the upgrade, contact Collibra Support instead.

Examples

GREEN

```
warnings
-----
-----
WARNING: following records will be removed:
members contains 1 values that will be removed RL for column
associated_resource_type
(2 rows)

audit_tables
-----
(0 rows)

errors
-----
(0 rows)

status
-----
GREEN
(1 row)
```

ORANGE

```
warnings
-----
(1 row)

              audit_tables
-----
WARNING: The database contains 48 audit table(s)
(1 row)

errors
-----
(0 rows)

status
-----
```

```
ORANGE
(1 row)
```

RED

```
warnings
-----
(1 row)

              audit_tables
-----
WARNING: The database contains 48 audit table(s)
(1 row)

              errors
-----
representations contains 191 invalidly formatted UUIDs for
column modifiedby
attachments contains 2 invalid enum values TY for column base_
resource_type
comments contains 1 invalid enum values CT for column base_
resource_type
comments contains 1 invalid enum values VT for column base_
resource_type
members contains 1 invalid enum values VT for column asso-
ciated_resource_type
members contains 2 invalid enum values CT for column asso-
ciated_resource_type
(6 rows)

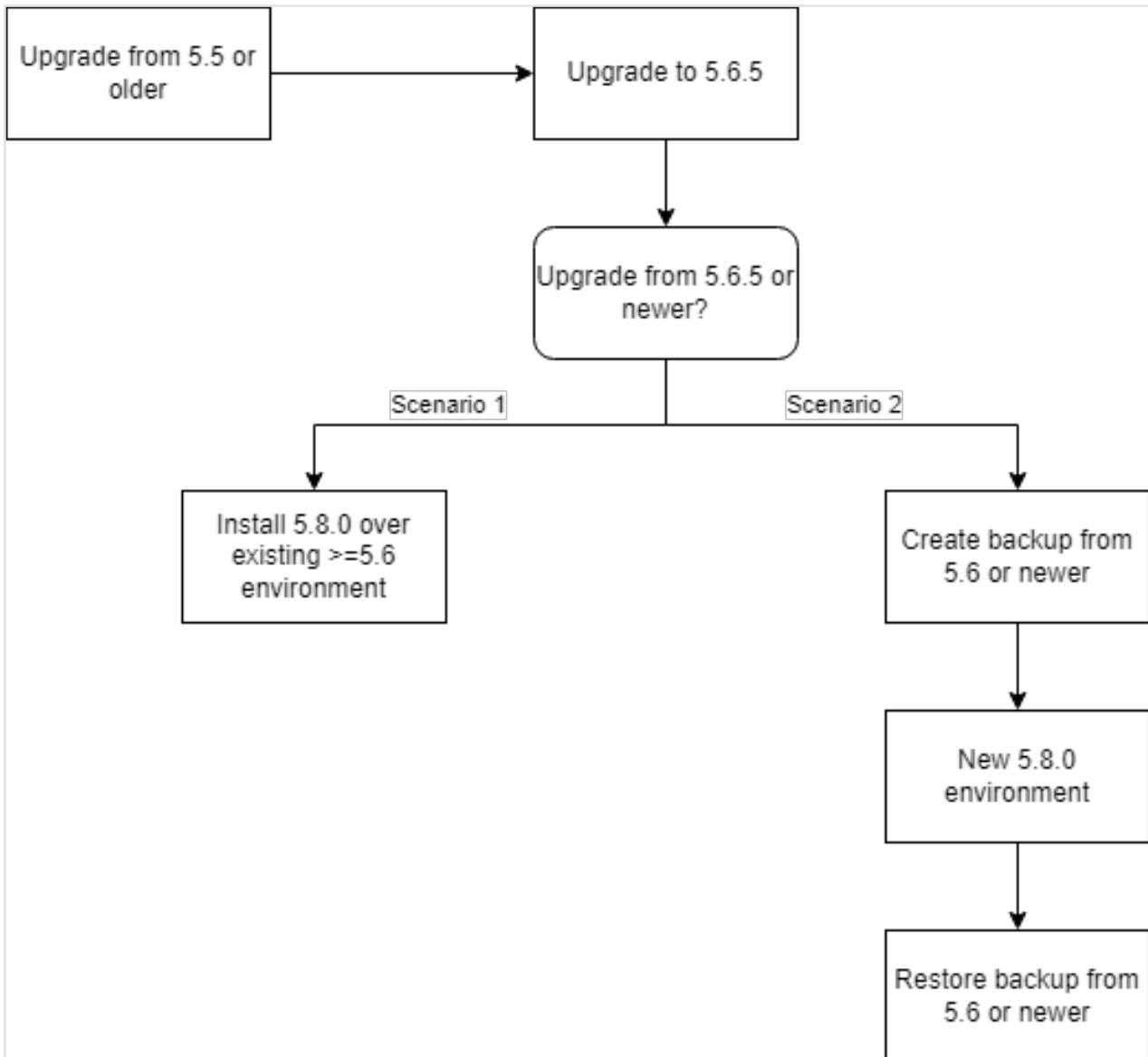
status
-----
RED
(1 row)
```

Upgrading to Collibra DGC 5.8.1

To upgrade to Collibra Data Governance Center 5.8.1, you need at least version 5.6.5 or newer.

Important

- When you upgrade to 5.8, [characteristics of some Catalog-related assets](#) are converted from rich-text format to plain-text format.
- Collibra Connect 1.4.x and older are not compatible with Collibra DGC 5.6 or newer. Upgrade to Collibra Connect 1.5 or 2.0.



There are two scenarios to upgrade to version 5.8.1:

1. Upgrade a 5.6.5 or newer environment by installing 5.8.1 over the current version.
[See Install 5.8.1 over an old 5.x version.](#)
2. Upgrade to 5.8.1 by installing a new 5.8.1 environment and restoring a 5.6.5 backup.
[See Install 5.8.1 with an old 5.x backup.](#)

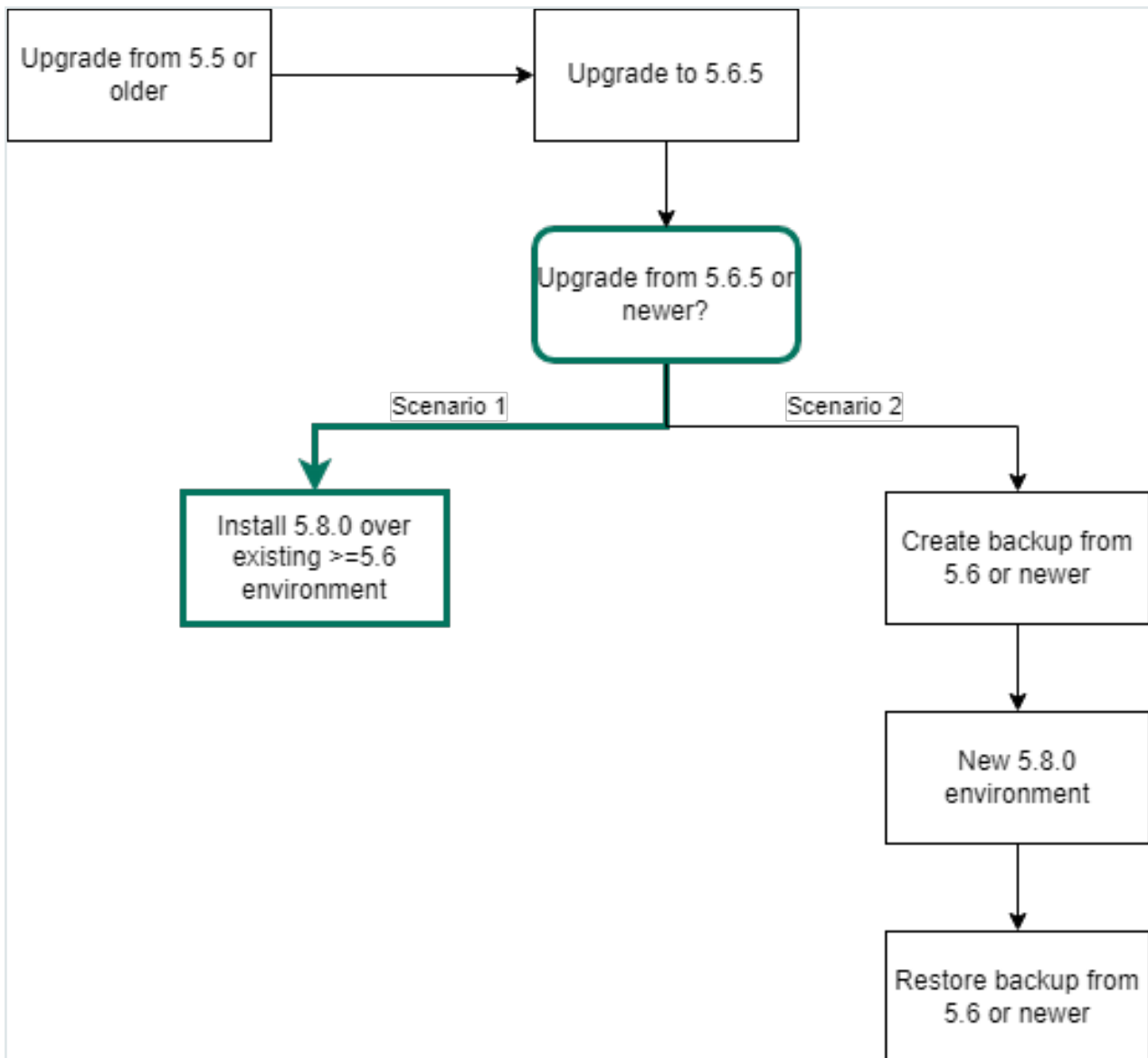
Important If you want to [upgrade a 5.5 version or older](#), first upgrade to 5.6.5 and then follow one of the scenarios.

In this chapter

Install 5.8.1 over 5.6.5 or newer	9
Install 5.8.1 with an old 5.x backup	15
Upgrade from 5.5 or older to 5.6.5	17

Install 5.8.1 over 5.6.5 or newer

In this upgrade scenario, you will upgrade a Collibra Data Governance Center 5.6.5 or newer environment to 5.8.1 by overwriting the current version with the 5.8.1 version:



Note You must upgrade with the same user account that was used for the installation, both on Linux and Windows. If the user account is no longer active, see [Upgrade an environment with another user account](#) in the Troubleshooting section.

Prerequisites

- You have enough free disk space in the volume that hosts the data folder, **collibra_data**. The free disk space must be at least the size of the current data.
For example, if your data in the data folder takes 5 GB, you need at least 5 GB of free

disk space on that volume to upgrade.

- [Stop](#) the environment and the [agent and Console services](#).
- The node that will run the Search service, must pass the following bootstrap checks:
 - [File descriptor](#)
 - [Maximum number of threads check](#)
 - [Maximum file size](#)
 - [Maximum size virtual memory check](#)
 - [Maximum map count check](#)

Type	Check description	Minimum value	Applies for installation type	Setting name
User limit	Maximum number of open file descriptors	65536	<ul style="list-style-type: none"> ▪ Without root permissions ▪ With root permissions, using System V init daemon 	nofile
	Maximum number of open threads/processes	4096		nproc
	Maximum file size	unlimited		fsize
Kernel parameter	Maximum virtual memory areas	262144	<ul style="list-style-type: none"> ▪ All 	vm.max_map_count

For more information on these settings, see the [Troubleshooting section](#).

- The [status of your repository](#) is Green or Orange.

Warning If the status of the repository is Red, do not start the upgrade procedure but contact Collibra Support.

Steps

1. [Stop](#) the environment.
2. [Stop](#) the agent and Collibra Console services.
3. [Install PostgreSQL 11](#).

4. Start the installer and follow the instructions.

Note The path to your PostgreSQL 11 installation differs per Linux operating system. In this example, the path is of a default installation on CentOS 7.

```
# ./dgc-linux-on-prem-5.8.0-3.sh
Verifying archive integrity... 100% All good.
Uncompressing DGC Installer 100%
Specify the installation directory [/opt/collibra]:

/opt/collibra contains a previous installation. Do you want
to perform an update? [y/N]
y
Before you can schedule an upgrade, you need to:
- Create a backup of the entire environment.
- In Collibra Console, stop all running services on this
node.
Have you completed these steps? [yes,NO]

yes
Specify the postgresql 11 path [/usr/pgsql-11]:

2022-09-16 10:32:51.581 - SUCCESS - Check umask settings
2022-09-16 10:32:51.592 - SUCCESS - Create installation and
data directories
2022-09-16 10:32:51.597 - SUCCESS - Check Search system
requirements
2022-09-16 10:32:52.030 - SUCCESS - Remove Agent system
service
2022-09-16 10:32:52.280 - SUCCESS - Remove Console system
service
2022-09-16 10:32:54.773 - SUCCESS - Extract JRE
2022-09-16 10:32:54.893 - SUCCESS - Copy server files
2022-09-16 10:32:54.894 - SUCCESS - Create PostgreSQL
temporary directories
2022-09-16 10:32:54.896 - SUCCESS - Move old postgresql
files to temporary directory
2022-09-16 10:32:54.897 - SUCCESS - Install PostgreSQL
configuration files to temporary directory
2022-09-16 10:33:12.658 - SUCCESS - Update postgresql
2022-09-16 10:33:12.706 - SUCCESS - Update postgresql path
in configuration files
2022-09-16 10:33:12.711 - SUCCESS - Remove tracing
directories
2022-09-16 10:33:12.790 - SUCCESS - Prepare for jobserver
update
```



```

2022-09-16 10:33:12.790 - SUCCESS - Create spark
directories
2022-09-16 10:33:14.324 - SUCCESS - Extract Spark
2022-09-16 10:33:14.333 - SUCCESS - Replace variables in
spark files
2022-09-16 10:33:14.342 - SUCCESS - Set permissions on
Spark directory

...

2022-09-16 10:33:36.422 - SUCCESS - Create installation
configuration file
2022-09-16 10:33:36.468 - SUCCESS - Create uninstall script
2022-09-16 10:33:36.473 - SUCCESS - Cleanup temporary
directories
2022-09-16 10:33:36.474 - SUCCESS - Cleanup old Postgres
binaries
2022-09-16 10:33:36.679 - SUCCESS - Make sure all
permissions are correct
2022-09-16 10:33:37.089 - SUCCESS - Install Agent system
service
2022-09-16 10:33:37.312 - SUCCESS - Install Console system
service
2022-09-16 10:33:41.431 - SUCCESS - Start Agent
2022-09-16 10:33:45.620 - SUCCESS - Start Console
2022-09-16 10:33:45.620 - COMPLETED - Installation finished
in 54352ms.

```

1. **Stop** the environment.
2. **Stop** the Collibra Agent and Collibra Console.
3. Double-click **setup.bat** of the 5.8.0 installer.
4. Click **Next**.
5. Select the installation directory of the old version and click **Update**.

Note If you select a different installation directory, you will **add** a new Collibra DGC installation next to the existing installation.

6. Click **Yes** to confirm that you have created a backup and that all the services are stopped on the node.
 - » The **Component selection** dialog box appears, indicating which services are installed on the node.
7. Select the services that you want to add to the node and click **Next**.

8. If you have selected new services in the previous step, you have to configure the services in the next dialog boxes. After the last configuration dialog box, click **Update**.
 - » The installed services on the node are upgraded and newly selected services are installed.
9. Click **Exit**.

Note

- If you have a multinode installation, repeat the previous steps for every node of the environment until you have upgraded all nodes.
- Make sure that you have installed the Search and Monitoring services on one of the nodes.

10. Start Collibra Console.
11. [Start](#) the environment.
 - » The start of the environment will be interrupted and your environment will be partially running.
12. Click the orange **Upgrade** button to continue the upgrade.

Service	Node	Status
Data Governance Center	Default node	● Stopped
Repository	Default node	● Running
Search	Default node	● Running

13. In the **Upgrade** dialog box, click **Upgrade**.
 - » Your environment is being upgraded. When all services are up and running again, the upgrade process has completed.

Tip

- In this phase, a backup of the current database will be created. If the creation would take too much time, it will time out and the upgrade will fail. [Increase](#) the backup timeout in that case and restart the upgrade.
- If the environment ends up in Error state, it is most likely because starting the DGC service takes too much time. See [Environment in error state after during the upgrade](#).
- If your environment is configured with SAML and it is no longer functional after the upgrade, consult the [troubleshooting section](#).

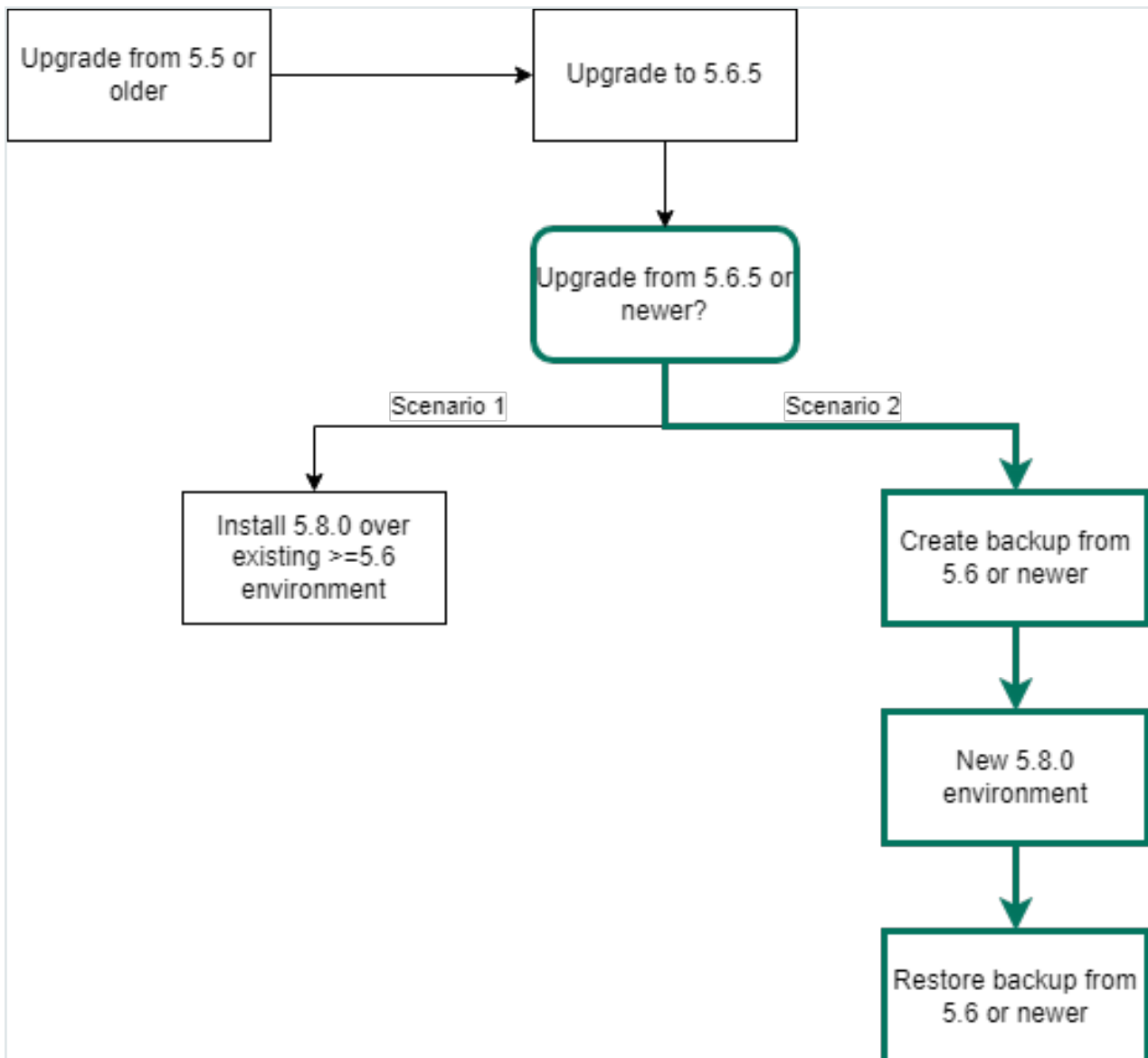
14. [Reindex](#) Collibra DGC.

15. Optionally, [upgrade](#) the activity history.

Install 5.8.1 with an old 5.x backup

In this upgrade scenario, you will upgrade a Collibra Data Governance Center 5.6.5 or newer environment to 5.8.1 by installing a new Collibra DGC 5.8.1 and restoring a 5.6.5 or newer backup.

Tip If you use nodes on which there are already one more services installed, you have to install the new version in a [new installation directory](#), unless the node has never been added to a Collibra Console, then you can overwrite the existing installation.



Prerequisites

- Make sure that your environment is at version [5.6.5 or newer](#).
- The [status of your repository](#) is Green or Orange.

Warning If the status of the repository is Red, do not start the upgrade procedure but contact Collibra Support.

Steps

1. [Create](#) a full backup of your Collibra DGC 5.6.5 or newer environment.
2. Install a new Collibra DGC 5.8.1 environment on [Linux](#) or [Windows](#).
3. [Restore](#) your backup.

This action automatically updates the database of the backup to the new version.

Tip If the environment ends up in Error state, it is most likely because starting the DGC service takes too much time. See [Environment in error state during the upgrade](#).

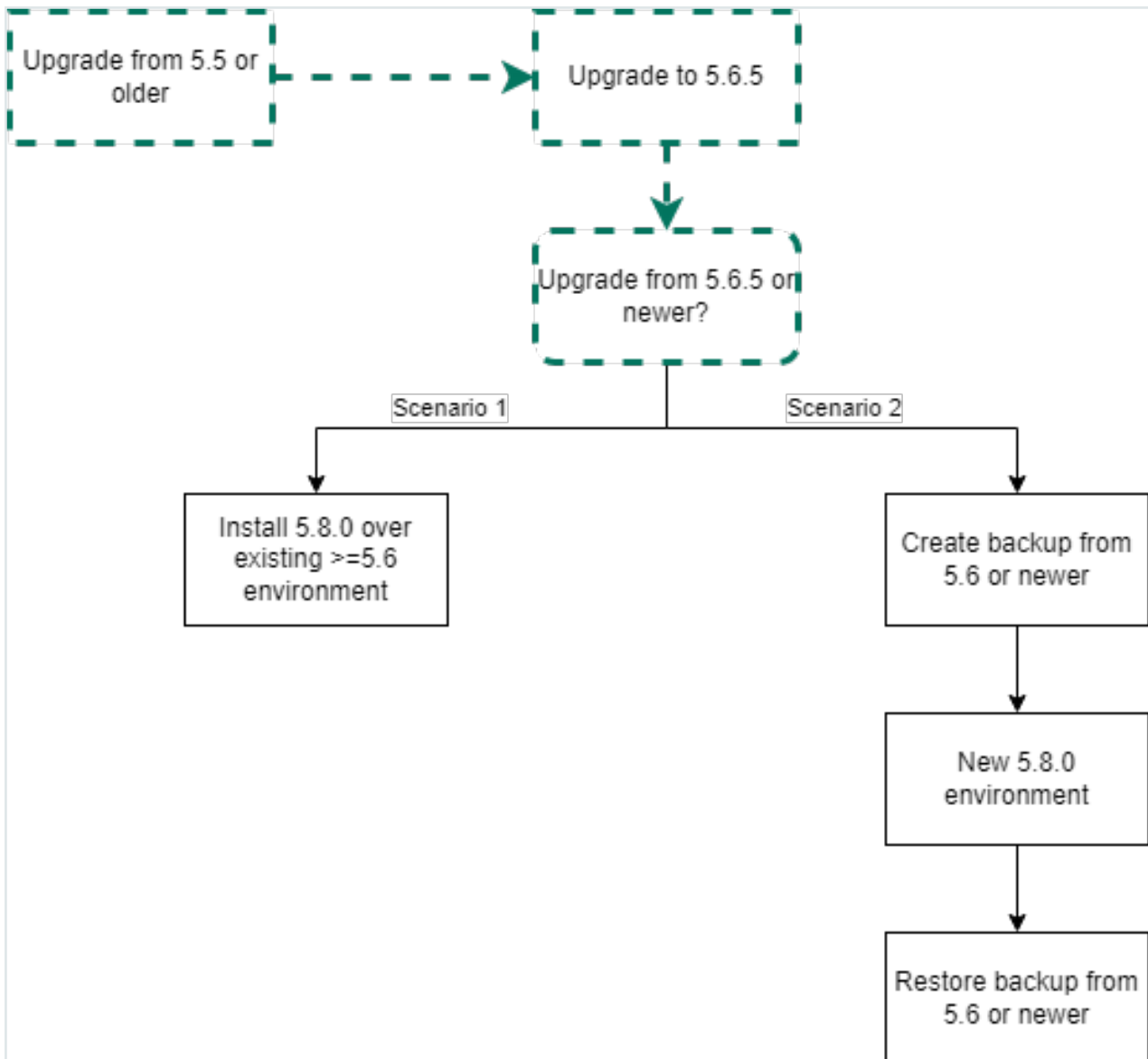
4. [Reindex](#) Collibra DGC.

If your environment is configured with SAML and it is no longer functional after the upgrade, consult the [troubleshooting section](#).

Upgrade from 5.5 or older to 5.6.5

If you want to upgrade from 5.5.x or older to 5.8.1, you first have to perform an intermediate upgrade to 5.6.5. Once you are upgraded to 5.6.5, you can upgrade to 5.8.1.

This section describes how you can upgrade a Collibra Data Governance Center 5.5.x or older to 5.6.5.



Prerequisites

- You have [downloaded](#) the 5.6.5 installer for your operating system.

Steps

1. Create a full backup of your Collibra DGC 5.5.x or older environment:
 - [4.5.x/4.6.x](#)
 - [5.x](#)
2. **Upgrade** your environment to 5.6.5.
 Make sure that you install at least Collibra Console and the Data Governance Center, Repository, Search and Monitoring services.

Tip If your environment is missing a mandatory service, for example the Search service, it will be indicated and you cannot start the environment.

The screenshot shows the 'Infrastructure' page for the 'Default environment'. The environment status is 'Incomplete' with a message: 'To start the environment, add the following service(s): Repository, Monitoring, Search'. Below this, there are buttons for 'Stop', 'Start', 'Create a diagnostic file', and 'More'. The 'Environment services' table shows the 'Data Governance Center' service on the 'Default node' with a status of 'Stopped'.

Service	Node	Status
Data Governance Center	Default node	● Stopped

Tip

- If your environment is configured with SAML and it is no longer functional after the upgrade, consult the [troubleshooting section](#).
- For more information about scopes after an upgrade from version 4.x to 5.x, see [Collibra Support Portal](#).

What's next

Choose one of the [upgrade scenarios](#) to upgrade 5.6.5 to 5.8.1.

Troubleshooting the upgrade

Installation log files	20
Diagnostic files	20
Upgrade fails on backup	23
Error "Version mismatch"	23
DGC does not start after an upgrade	24

Installation log files

If you encounter an installation failure, you can consult the installation log files for a first investigation.

The installation log file is stored in the Collibra installation directory:

- Default location on Linux as root or user with sudo privileges: **/opt/collibra**
- Default location on Linux as standard user: **~/collibra**
- Default location on Windows Server: **C:\collibra** The target installation directory cannot contain spaces.

The log file is **installation.log**.

Only in the event that the installer was not able to create the installation directory, there will be no installation log file.

Diagnostic files

A diagnostic file is a ZIP file containing files that can be used by support to help solve a support ticket.

For example, it contains log files and some configuration files of the database. It does not contain any actual database content. For more information about logs, see [Logging](#).

Content

Tip You can also find the log files in the **collibra_data** directory, for example **/opt/collibra_data/agent/logs**.

Console

- **config**: The configuration files of all environments, JVM settings, log settings and server settings.
- **installation**: The installation log file and Collibra DGC installation configuration.
- **logs**:
 - **console_wrapper.log**
 - **console.log**: Registration of all actions that are done in Collibra Console, for example sign in and out, start and stop an environment, create an environment, ...
 - **database*.log**: All transactions of the Collibra Console database.

Agent

- **config**: All configuration files of the agent.
- **installation**: The installation log file and Collibra Data Governance Center installation configuration.
- **logs**:
 - **agent_commands.log**
 - **agent_wrapper.log**
 - **agent.log**: Registration of all actions that are done by the Collibra DGC agent, for example starting jobs, database operations, ...

DGC

- **config**: All configuration files of the DGC service such as the configuration, search properties, JVM configuration and so on.

- logs:
 - dgc_jobs.log: Logging of the actual execution of a job.
 - dgc_recommender.log: Logging of the recommendation tool to create data sets for Data Catalog.
 - dgc_validations.log
 - dgc.log: Logging of the DGC service.

Repo

- config: All configuration files of the PostgreSQL database.
- logs: Logging of the PostgreSQL operations.
- blockedLocksInfo.json
- componentCalls.dmp
- locksInfo.json
- customMetrics.txt: Statistics of the repository such as number of assets, assets per column, active users and number of jobs.

Search

- config: The physical configuration of the Search service such as port configuration, hostname, keystore and JVM settings.
- logs: All log files of the Search service.
- JSON files with the Search service's cluster configuration, status, statistics and so on.

Spark-jobserver

- config: All configuration files of the Jobserver service, including its database configuration.
- logs: All log files of the Jobserver service.

Monitoring

- config: All configuration files of the Monitoring service.
- logs: All log files of the Monitoring service.

- snapshot: The snapshot of the monitoring database that is created when you create the diagnostics file.

Other files

- benchmark-result.txt: This file contains the performance benchmark results if selected during the [creation](#) of the diagnostic file.
- infraReport.txt: This file contains the details of the infrastructure on which Collibra DGC is installed.
- installation.log: This file contains the logging of the installation process.
- installationConfig.json: This file contains the settings that were selected during the installation process such as TCP ports and installation directory.

Upgrade fails on backup

One of the steps during an upgrade is the creation of a backup. If creating the backup takes too much time, the upgrade will fail.

Resolution

[Increase](#) the timeout settings of the backup, the default value is 12 hours or 43 200 000 milliseconds.

Error "Version mismatch"

If you upgrade a Collibra Data Governance Center 5.0 to 5.1 or newer by overwriting an existing setup, it may occur that you get an error if you start the Data Governance Center service before you have upgraded the repository.

Error

Version mismatch

There is a version mismatch between Data Governance Center and linked repository. Please upgrade the environment to be able to start the service.

Resolution

Upgrade the repository as described in [Install 5.8.1 over 5.6.5 or newer](#).

DGC does not start after an upgrade

If you upgraded a multi-node environment, it is possible that the environment doesn't start anymore.

In Collibra Console you see the following error message:

```
Multi nodes environment cannot mix loopback and public addresses.
```

To work around this issue, you can choose one of the following procedures:

- [via the Console configuration file](#).
- [via the Collibra Console user interface](#).

Collibra Console configuration file

1. Open an SSH session to the node on which Collibra Console runs.
2. Back up **console.db**:

```
cp /collibra_data/console/console.db \  
  /collibra_data/console/console.db.bck
```

Note The path to the file can be different for your environment.

3. [Stop Collibra Console](#).
4. Open the file **/collibra_data/console/console.db** for editing.
5. In the **nodeSet** section, look up the nodes that have a key **hostName** with value `localhost`.

```

"nodeSet" : [ {
  ...
  "hostName" : "localhost",
  "port" : 8081,
  "name" : "NODE NAME",
  "registered" : true,
  ...
} ],

```

6. Replace `localhost` by the private IP address of that node and repeat this for all nodes in this **nodeSet** section.
7. Save and close the file.
8. [Start Collibra Console](#).
9. [Start the environment](#).

Collibra Console user interface

1. Open Collibra Console with a user profile that has the **SUPER** role.
 - » Collibra Console opens with the **Infrastructure** page.
2. Remove the relevant services from the environment and optionally repository clusters.

The relevant services are the services that are installed on the nodes which are configured as localhost.
3. [Remove](#) the node from Collibra Console.
4. [Add](#) the node again in Collibra Console using the private IP address of the node.

Note If you receive the following error, follow the procedure as described on [Collibra Community](#).

```

Error while trying to set up a new node. Is the node
up and address correct?
certificateRegistrationFailed Message:
javax.ws.rs.ProcessingException:
java.net.SocketException:
Unexpected end of file from server.

```

5. Add the services on that node to the [environment](#) and or [repository cluster](#).
6. [Start](#) the environment.

API changes in 5.1 or newer

Collibra Data Governance Center 5.1 and newer have had a major overhaul with many functional, architectural and infrastructural changes to improve our product. Collibra has tried to keep the API backwards compatible as much as possible, but this was not always possible.

In this section you find an overview of the API changes in 5.1 and newer.

In this chapter

Deprecated API v1	28
API changes in 5.1 or newer	29
Infrastructural changes	29
Architectural changes	30
Functional changes	33
Java API changes	38
Java Model changes	64
Java DTO changes	90
Rest API changes	106
Rest Model changes	147

Deprecated API v1

In an earlier version of Collibra Data Governance Center, we introduced [Core API v2](#) next to Core API v1. From version 5.5.0 onwards, we have marked some API v1 interfaces, classes, methods, fields and enumerations as deprecated. You can open an overview of all Core API v1 deprecated content by following the **DEPRECATED** link of the Core API v1 documentation.

Deprecated means that you can still use the content in this version, but we recommend to migrate to Core API v2. If the deprecated content has an alternative in Core API v2, it will be clearly indicated in the documentation as shown in the following example:

If there is no alternative available in API v2, we recommend to file a [support ticket](#) or a feature request on the [Collibra Ideation platform](#).

API changes in 5.1 or newer

A new API (version 2) is introduced and will replace the API version 1 in the future. Everything from API v1 should therefore be regarded as deprecated. Where possible, we recommend to replace all API v1 calls by API v2.

It is possible that not every API v1 method has a corresponding API v2 method. Keep in mind that not all API v1 methods will be replaced, because many API v1 methods were not intended to be available in a public API. API v2 is a cleaner API that can be kept backwards compatible more easily.

As a consequence of the introduction of the API v2, the REST path `/latest` should no longer be used to access the API v1. The existing path `/1.0` should be used instead.

The API documentation is still available via <https://<yourdgcinstance>.yourcompany.com/docs/index.html>, where you can find the Collibra DGC Java and REST APIs.

Note REST API calls and errors are stored in the database, not in the logs.

As of version 5.3, you also have an import API.

Infrastructural changes

With the introduction of Collibra Data Governance Center 5.0, many changes have been introduced in the infrastructure to make it more robust, scalable and future proof. Due to these changes, the API that was available to maintain and configure this infrastructure has been removed or changed. Some of these changes include:

- Use of an embedded PostgreSQL database.
- Introduction of Collibra Console, which is used for configuration, logging, backup and restore, upgrade, and so on.
- Fixed use of a Tomcat application server.

Examples

- `ApplicationComponent.isRestartNeeded()` has been removed.
- `DatabaseResource` has been removed.

Architectural changes

Representation and Term hierarchy

One of the main architectural changes has been applied in the hierarchy of the **Representation** class. Most of the Collibra Data Governance Center model was extended from this **Representation** and its subclass **Term**. Some model concepts have been removed from this hierarchy. As a consequence, you can no longer use these models as if they are a representation or term (asset) in the generic methods of that class hierarchy.

For example, `TermComponent.getTerm(String term)` cannot be used anymore to retrieve a status by id, use `StatusComponent.getStatus(String status)` instead.

The models that are removed from the **Representation** and **Term** hierarchy include:

- Status
- VocabularyType (DomainType)
- ConceptType (AssetType)
- AttributeType
- BinaryFactType (RelationType)
- ComplexRelationType

Because these models extended from the **Representation** and **Term** classes, some functionalities have become obsolete, for example status, attachments, comments, workflows, relations. These APIs have been removed.

Since these models are no longer represented as assets, the meta domains containing these assets are obsolete and have been removed.

These domains include:

- Statuses (00000000-0000-0000-0000-000000006004)
- Vocabulary Types (00000000-0000-0000-0000-000000006002)
- Concept Types (00000000-0000-0000-0000-000000006001)

- Attribute Types (00000000-0000-0000-0000-000000006003)
- Relation Types (00000000-0000-0000-0000-000000006009)
- ComplexRelationTypes (00000000-0000-0000-0000-000000006006)

Some meta asset types, that were used to define the removed types as if they were assets, are not needed anymore.

These meta asset types have been removed:

- Attribute type (00000000-0000-0000-0000-000000005100)
- Relation type (00000000-0000-0000-0000-000000000011)
- STATIC_LIST Attribute Type (00000000-0000-0000-0000-000000005013)
- MULTI_STATIC_LIST Attribute Type (00000000-0000-0000-0000-000000005213)
- DATE Attribute Type (00000000-0000-0000-0000-000000005113)
- DATE_TIME Attribute Type (00000000-0000-0000-0000-000000005114)
- STRING Attribute Type (00000000-0000-0000-0000-000000005115)
- BOOLEAN Attribute Type (00000000-0000-0000-0000-000000005116)
- NUMERIC Attribute Type (00000000-0000-0000-0000-000000005117)
- SCRIPT Attribute Type (00000000-0000-0000-0000-000000005214)
- USER_TYPE Attribute Type (00000000-0000-0000-0000-000000005012)

The properties of these models have become real properties on the classes themselves and do no longer make use of the attribute system on assets to define them.

For instance a description is now a direct property of a vocabulary type and is no longer a description attribute on the vocabulary type asset. The API for calls like `getDescription()` has been kept backward compatible as much as possible, but it is no longer possible to use generic methods like

`AttributeComponent.getAttributesOfTypeForRepresentation(String representation, String label)` to retrieve this information. This has also an impact on the viewconfig that is used for exporting.

Two special asset types were used at the top level to define the hierarchy. Their purpose was more academic than needed for the working of the product, and have also been removed:

- Thing (00000000-0000-0000-0000-000000000001)
- Object Type (00000000-0000-0000-0000-000000000005)

Examples

- VocabularyComponent.findRelationTypes() has been removed.
- RelationReference.getStatusReference() has been removed.
- GET /1.0/concept_type/{representation}/workflows (ConceptTypeResource) has been removed.

Complex Relation Type

The Complex Relation Type implementation made use of assignments and the assignment groups. Due to assignment and assignment group changes, the complex relation type implementation and the related API have been changed as well while at the same time the API has been improved with more useful methods.

Examples

- ComplexRelationTypeComponent.changeRelationTypeContainers() has been removed.
- ComplexRelationType.getMandatoryAttributeTypes() has been added.

Activity stream (history)

The Activity Stream (history) has been completely refactored. It no longer uses **Hibernate Envers** to store the history information in audit tables. Also, the model to represent the history has changed to let it return more useable information for the users.

Most related APIs have changed and some are deprecated. ActivityStreamComponent is deprecated and ActivityStreamApi should be used instead.

Examples

- WorkflowComponent.getTaskActivityStream() returns a new model.
- RevisionComponent has been removed.

Configuration

The Configuration functionality has been refactored completely, therefore the related APIs have also almost completely changed. You have to provide the configuration information by using the **ConfigurationComponent.getProperty()** call.

On application level, you configure Collibra Data Governance Center in Collibra Console instead of adjusting the Collibra DGC configuration file.

Example

- `ConfigurationComponent.isMonthlyNotificationEnabled()` has been removed.

Functional changes

Some functions have changed, others are removed. As a consequence the related APIs have been adapted to fit the new functionality or have been removed.

Assignment

The **Assignment** functionality has been changed and as a consequence most related APIs too.

The assignment of the different aspects (statuses, attribute types, relation types, domain types, ...) now happens directly per asset type. The concepts of assignment containers and assignment groups have been removed.

Articulation rules are also created and assigned directly on the asset type. The concept of an articulation calculator has been removed.

Examples

- `WorkflowComponent.addAssignmentRule()` requires extra input parameters and returns a modified model.
- `StatusGroupComponent` has been removed.
- `ConceptTypeContainer` has been removed.

Snapshots

The snapshot functionality has been removed. The related APIs for snapshots, snapshot configurations and comparison of snapshots have been removed.

License management

The licensing functionality has changed and is now managed through the Collibra Console API.

Example

- `LicenseComponent.setLicense()` has been removed.

Taxonomy, Categorization and Classification

The taxonomy, categorization and classification functionalities have been removed. You have to use regular relations to indicate a taxonomy or categorization between assets.

Existing taxonomies are being replaced during an upgrade with relations of the type `Asset specializes/generalizes Asset (00000000-0000-0000-0000-000000007065)`.

For the categorization of new relations types like `Issue categorized by`, you can use `Issue Category (00000000-0000-0000-0000-000000007067)`.

The concept of a classification does not exist anymore.

Examples

- `ClassificationComponent` has been removed.
- `TermComponent.isCategorizationType()` has been removed.

Naming rule

The **Naming rule** functionality has been removed. This functionality was not fully available in Collibra Data Governance Center 4.x and was not used. The related API has been

removed.

Examples

- `VocabularyComponent.changeNamingRule()` has been removed.
- `NamingRuleReference` has been removed.

Views

The **Views** functionality has been improved and extended, for example with the concept of a working view. This has impact on its related API.

Examples

- `ViewComponent.getDefaultViewToShowForLocation()` has been removed.
- `View.setWorkingView()` has been added.

Tags

Tags are a new functionality introduced in 5.1. Its introduction extends some APIs and has mainly impact on the **Term** model.

Examples

- `Term.getTags()` method has been added.
- `FoundElement.getTags()` method has been added.

Fact type

In 4.x, the **Fact type** functionality was a functionality where a relation could be put between two assets without making use of a relation type. This functionality has been replaced by the **Fact Type** complex relation.

During the upgrade, any such existing fact types are being converted into instances of the **Fact Type** complex relation. APIs related to the **Fact type** functionality have been removed.

The Fact Type was often called 'BinaryFactType' which was mostly reusing the same API. The BinaryFactType has now become the relation type due to the representation changes and has therefore impact from the same changes.

Global create

In Collibra Data Governance Center 5.0, the **Global create** functionality has been introduced which enables creating assets, domains and communities and starting certain workflows from a central create button that is available anywhere in the application. To support this functionality some APIs have been extended. Additionally, an extra flag was added to workflow definitions to indicate whether they can be used by the **Global create** functionality.

Example

- `WorkflowDefinition.setGlobalCreate()` was added.

Diagrams

The diagrams were subjected to a big overhaul in Collibra Data Governance Center 5.1/5.8 and their functionality and design have been improved extensively. However, most of the Diagram related APIs are non-public. Therefore, these changes do not have much impact on the v1 public API.

The biggest change is in the format that is being used for the configuration of the diagram views. The JSON syntax used in 5.1/5.8 is updated from the syntax used in 4.5x, 4.6.x or 5.0.

The configuration of a diagram view remains in a JSON format though and has no immediate impact on the method in the public API.

Integrations

The two packaged integrations that were included in 4.x, Trillium and IBM BG, are no longer supported as of Collibra Data Governance Center 5.0. Their related APIs have been removed.

Examples

- 1.0/sync/ibm (SyncIBMResource) has been removed.
- 1.0/sync/trillium (SyncTrilliumResource) has been removed.

Java API changes

v4.6 Component Class	Unchanged / Removed / Modified	Method	Added / Removed / Modified	Modified in 5.0 or 5.1	Impacted by
ApplicationComponent	Modified	isUpgradePostActionsNeeded	Removed	5.0	Infrastructure
ApplicationComponent	Modified	isRestartNeeded	Removed	5.0	Infrastructure
ApplicationComponent	Modified	isRestoreInProgress	Removed	5.0	Infrastructure
CompareComponent	Modified	compareSnapshots	Removed	5.1	Snapshots
CompareComponent	Modified	compareSnapshotWithCurrent	Removed	5.1	Snapshots
CompareComponent	Modified	compareCurrentWithSnapshot	Removed	5.1	Snapshots

v4.6 Component Class	Unchanged / Removed / Modified	Method	Added / Removed / Modified	Modified in 5.0 or 5.1	Impacted by
ConfigurationComponent	Modified	Almost all methods removed, configuration was refactored completely. Methods that remained: - getString(String) - clear(String) - setProperty(String, Object) - getProperty(String, Class<T>) - getInteger(String) - getBoolean(String)	Remained	5.0	Configuration
LicenseComponent	Modified	setLicense	Removed	5.0	License
LoggerComponent	Unchanged				
SearchComponent	Modified	search(String search, final List<String> types, int max) - use {@link #search (SearchParameters)}	Removed	5.0	

v4.6 Component Class	Unchanged / Removed / Modified	Method	Added / Removed / Modified	Modified in 5.0 or 5.1	Impacted by
SearchComponent	Modified	search(String search, int max) - use {@link #search(SearchParameters)}	Removed	5.0	
UserComponent	Unchanged				
VerbaliserComponent	Modified	verbalise(AssetType)	Modified	5.1	Representation
VerbaliserComponent	Modified	verbalise(RelationType)	Modified	5.1	Representation
VerbaliserComponent	Modified	verbalise(AttributeType)	Modified	5.1	Representation
WorkflowComponent	Modified	getTaskActivityStream	Modified	5.1	History
WorkflowComponent	Modified	getTaskActivityFilter	Modified	5.1	History

v4.6 Component Class	Unchanged / Removed / Modified	Method	Added / Removed / Modified	Modified in 5.0 or 5.1	Impacted by
WorkflowComponent	Modified	addAssignmentRule	Modified	5.1	Assignment
WorkflowComponent	Modified	changeAssignmentRule	Modified	5.1	Assignment
ActivityStreamComponent	Modified			5.0	History
RevisionComponent	Removed				History
ArticulationComponent	Modified	removeArticulationCalculator	Removed	5.1	Assignment
ArticulationComponent	Modified	getAllArticulationCalculators	Removed	5.1	Assignment
ArticulationComponent	Modified	getArticulationCalculator	Removed	5.1	Assignment
ArticulationComponent	Modified	getArticulationCalculatorByName	Removed	5.1	Assignment
ArticulationComponent	Modified	changeArticulationCalculator	Removed	5.1	Assignment
ArticulationComponent	Modified	addArticulationCalculator	Removed	5.1	Assignment

v4.6 Component Class	Unchanged / Removed / Modified	Method	Added / Removed / Modified	Modified in 5.0 or 5.1	Impacted by
ArticulationComponent	Modified	addArticulationCalculator	Removed	5.1	Assignment
ArticulationComponent	Modified	addAssignmentRule	Removed	5.1	Assignment
ArticulationComponent	Modified	changeAssignmentRule	Removed	5.1	Assignment
ArticulationComponent	Modified	changeAssignmentRules	Removed	5.1	Assignment
ArticulationComponent	Modified	removeAssignmentRule	Removed	5.1	Assignment
ArticulationComponent	Modified	getAssignmentRule	Removed	5.1	Assignment
ArticulationComponent	Modified	addArticulationRule	Removed	5.1	Assignment
ArticulationComponent	Modified	changeArticulationRule	Removed	5.1	Assignment
ArticulationComponent	Modified	changeArticulationRules	Removed	5.1	Assignment
ArticulationComponent	Modified	removeArticulationRule	Removed	5.1	Assignment

v4.6 Component Class	Unchanged / Removed / Modified	Method	Added / Removed / Modified	Modified in 5.0 or 5.1	Impacted by
AssignmentGroupComponent	Removed			5.1	Assignment
AttributeTypeGroupComponent	Removed			5.1	Assignment
ComplexRelationTypeComponent	Modified	addAttributeTypeContainer	Removed	5.1	Assignment
ComplexRelationTypeComponent	Modified	addRelationTypeContainer	Removed	5.1	Assignment
ComplexRelationTypeComponent	Modified	changeAttributeTypeContainers	Removed	5.1	Assignment
ComplexRelationTypeComponent	Modified	changeRelationTypeContainers	Removed	5.1	Assignment

v4.6 Component Class	Unchanged / Removed / Modified	Method	Added / Removed / Modified	Modified in 5.0 or 5.1	Impacted by
ComplexRelationTypeComponent	Modified	find-ComplexRelationTypesContainingSignifiers	Removed	5.1	Complex Relation Type
ComplexRelationTypeComponent	Modified	getAttributeTypeContainers	Removed	5.1	Assignment
ComplexRelationTypeComponent	Modified	getAttributeTypes(complexRelationType)	Removed	5.1	Complex Relation Type
ComplexRelationTypeComponent	Modified	getAttributeTypes(complexRelationType, required)	Removed	5.1	Complex Relation Type
ComplexRelationTypeComponent	Modified	getRelationTypeContainters	Removed	5.1	Complex Relation Type
ComplexRelationTypeComponent	Modified	getRelationTypes(complexRelationType)	Removed	5.1	Complex Relation Type

v4.6 Component Class	Unchanged / Removed / Modified	Method	Added / Removed / Modified	Modified in 5.0 or 5.1	Impacted by
ComplexRelationTypeComponent	Modified	getRelationTypes(complexRelationType, identifying)	Removed	5.1	Complex Relation Type
ComplexRelationTypeComponent	Modified	removeContainter	Removed	5.1	Assignment
ConceptTypeGroupComponent	Removed			5.1	Assignment
MetricGroupComponent	Removed			5.1	Assignment
StatusGroupComponent	Removed			5.1	Assignment
TraceabilityGroupComponent	Removed			5.1	Assignment
ValidationGroupComponent	Removed			5.1	Assignment
AttachmentComponent	Unchanged				

v4.6 Component Class	Unchanged / Removed / Modified	Method	Added / Removed / Modified	Modified in 5.0 or 5.1	Impacted by
AttributeComponent	Modified	getAttributesInGroupForRepresentation	Removed	5.1	Representation
AttributeTypeComponent	Modified	getAttributeTypesInGroup	Removed	5.1	Representation
BackupComponent	Removed			5.0	Infrastructure
BootstrapComponent	Modified	initialize	Removed	5.0	Infrastructure
BootstrapComponent	Modified	bootstrap	Removed	5.0	Infrastructure
BootstrapComponent	Modified	createBootstrapScript	Removed	5.0	Infrastructure
BootstrapComponent	Modified	getAvailableBootstrapScripts	Removed	5.0	Infrastructure
CommentComponent	Unchanged				
CommunityComponent	Unchanged				

v4.6 Component Class	Unchanged / Removed / Modified	Method	Added / Removed / Modified	Modified in 5.0 or 5.1	Impacted by
FileComponent	Unchanged				
HyperlinkComponent	Unchanged				
I18nComponent	Modified	cleanCache	Removed	5.0	Infrastructure
ImpactComponent	Unchanged				
InputViewComponent	Modified	getColumnNames	Modified	5.0	
IOComponent	Unchanged				
OutputViewComponent	Modified	getTaxonomyJSONDataTable	Removed	5.0	
OutputViewComponent	Modified	getTreeJSONDataTable	Removed	5.0	
IssueComponent	Unchanged				
JobComponent	Unchanged				

v4.6 Component Class	Unchanged / Removed / Modified	Method	Added / Removed / Modified	Modified in 5.0 or 5.1	Impacted by
LogComponent	Unchanged				
NounExtractorComponent	Unchanged				
RelationComponent	Modified	changeStatus	Removed	5.1	Representation
RelationComponent	Modified	findPossibleStatuses	Removed	5.1	Representation
RelationTypeComponent	Modified	addRelationType	Modified	5.1	Representation
RelationTypeComponent	Modified	findPossibleRelationTypesForSourceTerm	Modified	5.1	Representation
RelationTypeComponent	Modified	findPossibleRelationTypesForTargetTerm	Modified	5.1	Representation

v4.6 Component Class	Unchanged / Removed / Modified	Method	Added / Removed / Modified	Modified in 5.0 or 5.1	Impacted by
RelationTypeComponent	Modified	findPossibleRelationTypesForSourceType	Modified	5.1	Representation
RelationTypeComponent	Modified	findPossibleRelationTypesForTargetType	Modified	5.1	Representation
RelationTypeComponent	Modified	findRelationTypesContainingRole	Modified	5.1	Representation
RelationTypeComponent	Modified	find-RelationTypesContainingRoleAndHeadOrTail	Modified	5.1	Representation
RelationTypeComponent	Modified	findRelationTypesContainingRoleOrSignifier	Modified	5.1	Representation
RelationTypeComponent	Modified	getAllRelationTypes	Modified	5.1	Representation

v4.6 Component Class	Unchanged / Removed / Modified	Method	Added / Removed / Modified	Modified in 5.0 or 5.1	Impacted by
RelationTypeComponent	Modified	getCodeRelationType	Modified	5.1	Representation
RelationTypeComponent	Modified	getRelationType	Modified	5.1	Representation
BinaryFactTypeComponent	Removed			5.1	Representation
ClassificationComponent	Removed			5.1	Categorization
ComplexRelationComponent	Modified	getRelations	Removed	5.1	Complex Relation Type
ConceptTypeComponent	Modified	ConceptType addConceptType(String signifier, String parent);	Modified	5.1	Representation

v4.6 Component Class	Unchanged / Removed / Modified	Method	Added / Removed / Modified	Modified in 5.0 or 5.1	Impacted by
ConceptTypeComponent	Modified	ConceptType addConceptType(String signifier)	Modified	5.1	Representation
ConceptTypeComponent	Modified	Term addConceptTypeWithCustomUUID (String signifier, String uuid)	Modified	5.1	Representation
ConceptTypeComponent	Modified	Term addConceptTypeWithCustomUUID (String signifier, String parent, String uuid)	Modified	5.1	Representation
ConceptTypeComponent	Modified	List<ConceptType> find-ConceptTypesContainingSignifier(String searchSignifier, boolean includeSystem, int offset, int limit)	Modified	5.1	Representation

v4.6 Component Class	Unchanged / Removed / Modified	Method	Added / Removed / Modified	Modified in 5.0 or 5.1	Impacted by
ConceptTypeComponent	Modified	List<ConceptType> find-ConceptTypesContainingSignifier(String searchSignifier, int offset, int limit)	Modified	5.1	Representation
ConceptTypeComponent	Modified	List<ConceptType> find-ConceptTypesContainingSignifier(String searchSignifier, boolean includeSystem, String resourceType, int offset, int limit)	Removed	5.1	Representation
ConceptTypeComponent	Modified	ConceptType getConceptType(String conceptType)	Modified	5.1	Representation

v4.6 Component Class	Unchanged / Removed / Modified	Method	Added / Removed / Modified	Modified in 5.0 or 5.1	Impacted by
ConceptTypeComponent	Modified	List<ConceptType> getConceptTypes()	Modified	5.1	Representation
ConceptTypeComponent	Modified	ConceptType getBusinessTermType()	Modified	5.1	Representation
ConceptTypeComponent	Modified	ConceptType getCodeTermType()	Modified	5.1	Representation
ConceptTypeComponent	Modified	Map<ConceptType, Object> getConceptTypeHierarchy()	Modified	5.1	Representation
ConceptTypeComponent	Modified	List<Representation> findPossibleAttributeOrRelationTypes(String conceptType)	Removed	5.1	Representation

v4.6 Component Class	Unchanged / Removed / Modified	Method	Added / Removed / Modified	Modified in 5.0 or 5.1	Impacted by
RepresentationComponent	Modified	boolean isSpecializedConceptOf(String toTest, String parent)	Removed	5.1	Representation
RepresentationComponent	Modified	Collection<Representation> getSpecializedConcepts(String representation, int limit)	Removed	5.1	Representation
RepresentationComponent	Modified	List<AttributeTypeGroup> getAttributeAndRelationGroups(String representation)	Removed	5.1	Assignment
RepresentationComponent	Modified	List<StatusGroup> getStatusGroups(String representation)	Removed	5.1	Assignment
RepresentationComponent	Modified	List<ConceptTypeGroup> getConceptGroups(String representation)	Removed	5.1	Assignment

v4.6 Component Class	Unchanged / Removed / Modified	Method	Added / Removed / Modified	Modified in 5.0 or 5.1	Impacted by
RepresentationComponent	Modified	Representation changeGeneralConcept (String specializedRepresentation, String generalRepresentation)	Removed	5.1	Representation
RepresentationComponent	Modified	Job changeGeneralConceptsAsync (List<String> specializedRepresentations, String generalRepresentation)	Removed	5.1	Representation
RepresentationComponent	Modified	Representation removeGeneralConcept (String representation)	Removed	5.1	Representation
RepresentationComponent	Modified	List<Representation> getAllGeneralConcepts(String representation)	Removed	5.1	Representation
RepresentationComponent	Modified	boolean hasGeneralConcept(String representation, String generalConcept)	Removed	5.1	Representation

v4.6 Component Class	Unchanged / Removed / Modified	Method	Added / Removed / Modified	Modified in 5.0 or 5.1	Impacted by
RepresentationComponent	Modified	List<Representation> getAllSpecializedConcepts(String representation)	Removed	5.1	Representation
StatusComponent	Unchanged				
TermComponent	Modified	Term getRootType(String term)	Modified	5.1	Representation
TermComponent	Modified	boolean isCategorizationType(String term)	Removed	5.1	Categorization
TermComponent	Modified	Term removeCategorizationType(String generalConcept, String categorizationType)	Removed	5.1	Categorization
TermComponent	Modified	Term removeCategory(String category)	Removed	5.1	Categorization

v4.6 Component Class	Unchanged / Removed / Modified	Method	Added / Removed / Modified	Modified in 5.0 or 5.1	Impacted by
TermComponent	Modified	List<Term> addCategories(String vocabulary, Collection<String> signifiers, String generalConcept, String categorizationType)	Removed	5.1	Categorization
TermComponent	Modified	Term addCategory(String vocabulary, String signifier, String generalConcept, String categorizationType)	Removed	5.1	Categorization
TermComponent	Modified	List<Term> changeCategorizationType(Collection<String> categories, String categorizationType)	Removed	5.1	Categorization
TermComponent	Modified	List<Term> changeCategorizationType(Collection<String> categories, String generalConcept, String categorizationType)	Removed	5.1	Categorization
TermComponent	Modified	Term changeCategorizationType(String category, String categorizationType)	Removed	5.1	Categorization

v4.6 Component Class	Unchanged / Removed / Modified	Method	Added / Removed / Modified	Modified in 5.0 or 5.1	Impacted by
TermComponent	Modified	Term changeCategorizationType(String category, String generalConcept, String categorizationType)	Removed	5.1	Categorization
TermComponent	Modified	List<Term> findCategories(String generalConcept, String categorizationType)	Removed	5.1	Categorization
TermComponent	Modified	List<Term> findCategorizationTypes(String generalConcept) findCategorizationTypes (String generalConcept)	Removed	5.1	Categorization
TermComponent	Modified	List<Term> findPossibleObjectTypes(String term)	Removed	5.1	Representation
LdapComponent	Unchanged				
RightsComponent	Unchanged				

v4.6 Component Class	Unchanged / Removed / Modified	Method	Added / Removed / Modified	Modified in 5.0 or 5.1	Impacted by
MetadataComponent	Modified	String moveIDPMetadata(String file)	Removed	5.0	
SnapshotComponent	Removed			5.1	Snapshots
StatisticComponent	Unchanged				
MappingComponent	Unchanged				
UpgradeComponent	Removed			5.0	Infrastructure
ViewComponent	Modified	View getDefaultViewToShowForLocation(String location, View.EType type)	Removed	5.0	Views
ViewComponent	Modified	void setLastSeenView(String view, String resource)	Modified	5.1	Views

v4.6 Component Class	Unchanged / Removed / Modified	Method	Added / Removed / Modified	Modified in 5.0 or 5.1	Impacted by
ViewComponent	Modified	List<View> getPossibleViewsForResource (String location, boolean startsWith, String resource, String type)	Removed	5.0	Views
ViewComponent	Modified	View getDefaultViewToShowForResource (String location, String resource, String type)	Removed	5.0	Views
ViewRightComponent					
VocabularyComponent	Modified	Vocabulary changeNamingRule(String vocabulary, String newNamingRule)	Removed	5.0	Naming Rule
VocabularyComponent	Modified	List<Resource> findPossibleAttributeOrRelationTypes(String vocabulary)	Modified	5.1	Representation
VocabularyComponent	Modified	List<RelationType> findPossibleFactTypes(String vocabulary)	Modified	5.1	Representation

v4.6 Component Class	Unchanged / Removed / Modified	Method	Added / Removed / Modified	Modified in 5.0 or 5.1	Impacted by
VocabularyComponent	Modified	List<Term> findPossibleObjectTypes(String vocabulary)	Modified	5.1	Representation
VocabularyComponent	Modified	List<BinaryFactType> findPossibleRelationTypes(String vocabulary)	Modified	5.1	Representation
VocabularyComponent	Modified	List<BinaryFactType> findRelationTypes (String vocabulary)	Removed	5.1	Representation
VocabularyTypeComponent	Modified	addVocabularyType(java.lang.String signifier)	Modified	5.1	Representation
VocabularyTypeComponent	Modified	DomainType addVocabularyType (java.lang.String signifier, java.lang.String parent)	Modified	5.1	Representation

v4.6 Component Class	Unchanged / Removed / Modified	Method	Added / Removed / Modified	Modified in 5.0 or 5.1	Impacted by
VocabularyTypeComponent	Modified	DomainType addVocabularyTypeWithCustomUUID(java.lang.String signifier, java.lang.String uuid)	Modified	5.1	Representation
VocabularyTypeComponent	Modified	DomainType addVocabularyTypeWithCustomUUID(java.lang.String signifier, java.lang.String parent, java.lang.String uuid)	Modified	5.1	Representation
VocabularyTypeComponent	Modified	DomainType findVocabularyTypeByName(java.lang.String domainTypeName)	Modified	5.1	Representation
VocabularyTypeComponent	Modified	java.util.List<DomainType> findVocabularyTypesContainingSignifier(java.lang.String searchSignifier)	Modified	5.1	Representation

v4.6 Component Class	Unchanged / Removed / Modified	Method	Added / Removed / Modified	Modified in 5.0 or 5.1	Impacted by
VocabularyTypeComponent	Modified	java.util.List<DomainType> getAllSpecializedVocabularyTypes(java.lang.String domainType)	Modified	5.1	Representation
VocabularyTypeComponent	Modified	DomainType getCodeVocabularyType()	Modified	5.1	Representation
VocabularyTypeComponent	Modified	DomainType getGlossaryVocabularyType()	Modified	5.1	Representation
VocabularyTypeComponent	Modified	DomainType getVocabularyType (java.lang.String vocabularyType)	Modified	5.1	Representation
VocabularyTypeComponent	Modified	java.util.Map<DomainType,java.lang.Object> getVocabularyTypeHierarchy()	Modified	5.1	Representation
VocabularyTypeComponent	Modified	java.util.List<DomainType> getVocabularyTypes()	Modified	5.1	Representation

Java Model changes

v4.6 Model	Unchanged / Removed / Modified	Method	Added / Removed / Modified	Modified in 5.0 or 5.1	Impacted by
EntityWithId	Unchanged				
Resource	Modified	checkConstraint()	Removed	5.0	
Resource	Modified	getNaturalIdentifier()	Added	5.0	
Resource	Modified	getParent()	Added	5.0	
Resource	Modified	updateLastModified()	Modified	5.0	
Resource18n	Unchanged				
Verbalisable	Unchanged				
ArticulationCalculator	Removed			5.1	Assignment

v4.6 Model	Unchanged / Removed / Modified	Method	Added / Removed / Modified	Modified in 5.0 or 5.1	Impacted by
ArticulationRule	Modified	getAttributeTypeId()	Added	5.1	
ArticulationRule	Modified	getAttributeValue()	Removed	5.1	
ArticulationRule	Modified	getStatusId()	Added	5.1	
ArticulationRule	Modified	setAttributeValue()	Removed	5.1	
AssignmentGroup	Removed			5.1	Assignment
AssignmentRule	Modified	deepCopy(View)	Added	5.0	Assignment
AssignmentRule	Modified	getView()	Added	5.0	Assignment
AssignmentRule	Modified	getVocabularyType()	Added	5.1	Assignment
AttributeTypeContainer	Removed			5.1	Assignment
AttributeTypeGroup	Removed			5.1	Assignment

v4.6 Model	Unchanged / Removed / Modified	Method	Added / Removed / Modified	Modified in 5.0 or 5.1	Impacted by
ComplexRelationTypeGroup	Removed			5.1	Assignment
ConceptTypeContainer	Removed			5.1	Assignment
ConceptTypeGroup	Removed			5.1	Assignment
MetricGroup	Removed			5.1	Assignment
RepresentationContainer	Removed			5.1	Assignment
StatusContainer	Removed			5.1	Assignment
StatusGroup	Removed			5.1	Assignment
TraceabilityGroup	Removed			5.1	Assignment
ValidationGroup	Removed			5.1	Assignment
ValidationRuleContainer	Removed			5.1	Assignment

v4.6 Model	Unchanged / Removed / Modified	Method	Added / Removed / Modified	Modified in 5.0 or 5.1	Impacted by
Attachment	Unchanged				
AttachmentFactory	Unchanged				
ResourceWithAttachment	Unchanged				
Attribute	Modified	getLabel()	Removed	5.1	Representation
Attribute	Modified	getType()	Added	5.1	Representation
Attribute	Modified	getValues()	Added	5.1	Representation
BooleanAttribute	Unchanged				
DateAttribute	Unchanged				
DateTimeAttribute	Unchanged				
MultiValueListAttribute	Unchanged				

v4.6 Model	Unchanged / Removed / Modified	Method	Added / Removed / Modified	Modified in 5.0 or 5.1	Impacted by
NumericAttribute	Unchanged				
ScriptAttribute	Unchanged				
SingleValueListAttribute	Modified	setValue(String value)	Removed	5.0	
StringAttribute	Unchanged				
Comment	Unchanged				
CommentFactory	Unchanged				
ResourceWithComment	Unchanged				
Community	Unchanged				
CommunityFactory	Unchanged				
DatabaseConstants	Removed			5.0	Infrastructure

v4.6 Model	Unchanged / Removed / Modified	Method	Added / Removed / Modified	Modified in 5.0 or 5.1	Impacted by
Hyperlink	Unchanged				
Job	Unchanged				
ConstraintNamingRule	Removed			5.0	Naming Rule
GeneratorNamingRule	Removed			5.0	Naming Rule
NamingRule	Removed			5.0	Naming Rule
NamingRuleFactory	Removed			5.0	Naming Rule
DatabaseProperty	Unchanged				
Relation	Modified	getRelationTypeId()	Added	5.1	Representation
Relation	Modified	getTargetId()	Added	5.1	

v4.6 Model	Unchanged / Removed / Modified	Method	Added / Removed / Modified	Modified in 5.0 or 5.1	Impacted by
Relation	Modified	isInComplexRelation()	Added	5.1	Complex Relation Type
Relation	Modified	setStatus()	Removed	5.1	Representation
RelationFactory	Modified	Relation: makeRelation(Term, Term, BinaryFactType, Long, Long)	Modified	5.1	Representation
RelationFactory	Modified	Relation: makeRelation(Vocabulary, String, Vocabulary, String, BinaryFactType, Long, Long)	Modified	5.1	Representation
RelationFactory	Modified	BinaryFactType: makeRelationType (Term, String, String, Term)	Modified	5.1	Representation
RelationFactory	Modified	BinaryFactType: makeRelationType (Term, String, String, Term , String)	Modified	5.1	Representation

v4.6 Model	Unchanged / Removed / Modified	Method	Added / Removed / Modified	Modified in 5.0 or 5.1	Impacted by
RelationTrace	Modified	addRelationTraceEntry	Modified	5.1	Representation
RelationTrace	Modified	hasEntries()	Added	5.1	Representation
RelationTraceEntry	Modified	getEndingConceptType()	Modified	5.1	Representation
AttributeType	Modified	getAllowedValues()	Added	5.1	Representation
AttributeType	Modified	getAttributeKind()	Added	5.1	Representation
AttributeType	Modified	getDescription()	Added	5.1	Representation
AttributeType	Modified	getIsInteger()	Added	5.1	Representation
AttributeType	Modified	getLanguage()	Added	5.1	Representation
AttributeType	Modified	getName()	Added	5.1	Representation
AttributeType	Modified	getStatisticsenabled()	Added	5.1	Representation

v4.6 Model	Unchanged / Removed / Modified	Method	Added / Removed / Modified	Modified in 5.0 or 5.1	Impacted by
AttributeType	Modified	setAllowedValues()	Added	5.1	Representation
AttributeType	Modified	setAttributeKind()	Added	5.1	Representation
AttributeType	Modified	setDescription()	Added	5.1	Representation
AttributeType	Modified	setIsInteger()	Added	5.1	Representation
AttributeType	Modified	setLanguage()	Added	5.1	Representation
AttributeType	Modified	setName()	Added	5.1	Representation
AttributeType	Modified	setStatisticsEnabled()	Added	5.1	Representation
ComplexRelation	Modified	getAssetsFromLegs()	Added	5.1	Complex Relation Type
ComplexRelation	Modified	getComplexRelationType()	Added	5.1	Complex Relation Type

v4.6 Model	Unchanged / Removed / Modified	Method	Added / Removed / Modified	Modified in 5.0 or 5.1	Impacted by
ComplexRelation	Modified	getIdentifyingAssets()	Added	5.1	Complex Relation Type
ComplexRelation	Modified	getLegs()	Added	5.1	Complex Relation Type
ComplexRelation	Modified	setLegs()	Added	5.1	Complex Relation Type
ComplexRelationType	Modified	getAssetTypeIdsOfIdentifyingLegs()	Added	5.1	Complex Relation Type
ComplexRelationType	Modified	getAttributeTypes()	Added	5.1	Complex Relation Type
ComplexRelationType	Modified	getAttributeTypesAssigned()	Added	5.1	Complex Relation Type

v4.6 Model	Unchanged / Removed / Modified	Method	Added / Removed / Modified	Modified in 5.0 or 5.1	Impacted by
ComplexRelationType	Modified	getIdentifyingLegTypes()	Added	5.1	Complex Relation Type
ComplexRelationType	Modified	getLegTypes()	Added	5.1	Complex Relation Type
ComplexRelationType	Modified	getMandatoryAttributeTypes()	Added	5.1	Complex Relation Type
ComplexRelationType	Modified	getMandatoryAttributeTypesIds()	Added	5.1	Complex Relation Type
ComplexRelationType	Modified	getMaximumCardinalityForAttribute()	Added	5.1	Complex Relation Type
ComplexRelationType	Modified	getMaximumCardinalityForLegType()	Added	5.1	Complex Relation Type

v4.6 Model	Unchanged / Removed / Modified	Method	Added / Removed / Modified	Modified in 5.0 or 5.1	Impacted by
ComplexRelationType	Modified	getNonIdentifyingLegTypes()	Added	5.1	Complex Relation Type
ComplexRelationType	Modified	getOptionalAttributeTypes()	Added	5.1	Complex Relation Type
ComplexRelationType	Modified	getRelationTypeById()	Added	5.1	Complex Relation Type
ComplexRelationType	Modified	getRelationTypeForLegTypeId()	Added	5.1	Complex Relation Type
ComplexRelationType	Modified	getRelationTypeIdsOfIdentifyingLegs()	Added	5.1	Complex Relation Type
ComplexRelationType	Modified	getRelationTypeIdsOfNonIdentifyingLegs()	Added	5.1	Complex Relation Type

v4.6 Model	Unchanged / Removed / Modified	Method	Added / Removed / Modified	Modified in 5.0 or 5.1	Impacted by
ComplexRelationType	Modified	getRelationTypesFromLegs()	Added	5.1	Complex Relation Type
ComplexRelationType	Modified	hasAttributes()	Added	5.1	Complex Relation Type
ComplexRelationType	Modified	hasAttributeTypeAssigned()	Added	5.1	Complex Relation Type
ComplexRelationType	Modified	hasRelationTypeAssigned()	Added	5.1	Complex Relation Type
ConceptType	Removed			5.1	Representation
Representation	Modified	getGeneralConcept()	Removed	5.1	Representation
Representation	Modified	getDescriptions()	Removed	5.1	Representation

v4.6 Model	Unchanged / Removed / Modified	Method	Added / Removed / Modified	Modified in 5.0 or 5.1	Impacted by
Representation	Modified	Term: getType()	Modified	5.1	Representation
Representation	Modified	setAttributes()	Added	5.1	Representation
Representation	Modified	setGeneralConcept()	Removed	5.1	Representation
Representation	Modified	setType(Term)	Modified	5.1	Representation
RepresentationFactory	Modified	makeAttributeType()	Removed	5.1	Representation
RepresentationFactory	Modified	makeBinaryFactType()	Removed	5.1	Representation
RepresentationFactory	Modified	makeBooleanAttribute()	Removed	5.1	Representation
RepresentationFactory	Modified	makeConceptType()	Removed	5.1	Representation
RepresentationFactory	Modified	makeDateAttribute()	Removed	5.1	Representation
RepresentationFactory	Modified	makeDateTimeAttribute()	Removed	5.1	Representation

v4.6 Model	Unchanged / Removed / Modified	Method	Added / Removed / Modified	Modified in 5.0 or 5.1	Impacted by
RepresentationFactory	Modified	makeMultiValueListAttribute()	Removed	5.1	Representation
RepresentationFactory	Modified	makeNumericAttribute()	Removed	5.1	Representation
RepresentationFactory	Modified	makeScriptAttribute()	Removed	5.1	Representation
RepresentationFactory	Modified	makeSingleValueListAttribute()	Removed	5.1	Representation
RepresentationFactory	Modified	makeStatus()	Removed	5.1	Representation
RepresentationFactory	Modified	makeStringAttribute()	Removed	5.1	Representation
RepresentationFactory	Modified	Term: makeTerm(String, Vocabulary, String, AssetType)	Modified	5.1	Representation
RepresentationFactory	Modified	Term: makeTerm(Vocabulary, String)	Removed	5.1	Representation
RepresentationFactory	Modified	Term: makeTerm(Vocabulary, String, Term)	Modified	5.1	Representation

v4.6 Model	Unchanged / Removed / Modified	Method	Added / Removed / Modified	Modified in 5.0 or 5.1	Impacted by
RepresentationFactory	Modified	Vocabulary: makeVocabulary(Community, String, String, Term)	Modified	5.1	Representation
RepresentationFactory	Modified	Vocabulary: makeVocabulary(Community, String, String, Term, NamingRule, String)	Removed	5.1	Representation
RepresentationFactory	Modified	Vocabulary: makeVocabulary(Community, String, String, Term, String)	Modified	5.1	Representation
RepresentationFactory	Modified	makeVocabularyType()	Removed	5.1	Representation
ResourceIDConstants	Modified			5.1	
Snapshot	Unchanged				
SnapshotConfiguration	Modified	ProductModule: getProductModule()	Modified	5.0	Snapshots

v4.6 Model	Unchanged / Removed / Modified	Method	Added / Removed / Modified	Modified in 5.0 or 5.1	Impacted by
Status	Modified	getSignifier()	Added	5.0	Representation
Status	Modified	setSignifier()	Added	5.0	Representation
Status	Modified	getDescription()	Added	5.0	Representation
Status	Modified	setDescription()	Added	5.0	Representation
Term	Modified	getCategorizationType()	Removed	5.1	Categorization
Term	Modified	isCategory()	Removed	5.1	Categorization
Term	Modified	getTags()	Added	5.1	Tags
Term	Modified	setCategorizationType()	Removed	5.1	Categorization
ValidationRule	Unchanged				
Vocabulary	Modified	addBinaryFactType()	Removed	5.1	Fact Type

v4.6 Model	Unchanged / Removed / Modified	Method	Added / Removed / Modified	Modified in 5.0 or 5.1	Impacted by
Vocabulary	Modified	getBinaryFactTypes()	Removed	5.1	Fact Type
Vocabulary	Modified	getNamingRule()	Removed	5.1	Naming Rule
Vocabulary	Modified	Term: getType(String)	Modified	5.1	Representation
Vocabulary	Modified	setNamingRule()	Removed	5.1	Naming Rule
VocabularyType	Removed			5.1	Representation
WorkflowDefinition	Modified	getAssetAssignmentRules()	Added	5.1	Assignment
WorkflowDefinition	Modified	getDomainAssignmentRules()	Added	5.1	Assignment
WorkflowDefinition	Modified	isGlobalCreate()	Added	5.0	Global Create
WorkflowDefinition	Modified	setGlobalCreate()	Added	5.0	Global Create
BinaryFactType	Removed			5.1	Representation

v4.6 Model	Unchanged / Removed / Modified	Method	Added / Removed / Modified	Modified in 5.0 or 5.1	Impacted by
SnapshotEntry	Unchanged				
RealTimeStatisticEntry	Unchanged				
StatisticEntry	Unchanged				
Mapping	Unchanged				
Address	Unchanged				
Email	Unchanged				
Group	Unchanged				
InstantMessagingAccount	Unchanged				
Member	Modified	getOwnerType()	Added	5.0	
Member	Modified	getPeople()	Added	5.0	

v4.6 Model	Unchanged / Removed / Modified	Method	Added / Removed / Modified	Modified in 5.0 or 5.1	Impacted by
Member	Modified	getUserIds()	Added	5.0	
Member	Modified	isGlobal()	Added	5.0	
PhoneNumber	Unchanged				
Role	Unchanged				
User	Unchanged				
UserAuthenticationEvent	Modified	getDgcVersion()	Added	5.0	
UserAuthenticationEvent	Modified	getLicenseType()	Added	5.0	
UserAuthenticationEvent	Modified	getProductPermissions()	Added	5.0	
UserAuthenticationEvent	Modified	getSessionId()	Added	5.0	
UserAuthenticationEvent	Modified	getSessionTimeout()	Added	5.0	

v4.6 Model	Unchanged / Removed / Modified	Method	Added / Removed / Modified	Modified in 5.0 or 5.1	Impacted by
UserAuthenticationEvent	Modified	getUserAgent()	Added	5.0	
UserAuthenticationEvent	Modified	getUserAgentVersion()	Added	5.0	
UserFactory	Unchanged				
Website	Unchanged				
TermValidationResult	Unchanged				
View	Modified	EType	Added	5.0	Views
View	Modified	copyFrom()	Added	5.0	Views
View	Modified	deepCopy()	Added	5.0	Views
View	Modified	getOriginalView()	Added	5.0	Views
View	Modified	getType()	Added	5.0	Views

v4.6 Model	Unchanged / Removed / Modified	Method	Added / Removed / Modified	Modified in 5.0 or 5.1	Impacted by
View	Modified	isFallback()	Added	5.1	Views
View	Modified	setFallback()	Added	5.1	Views
View	Modified	setOriginalView()	Added	5.0	Views
View	Modified	setType()	Added	5.0	Views
View	Modified	setWorkingView()	Added	5.0	Views
ViewRight	Unchanged				
ViewRule	Modified	deepCopy()	Added	5.0	Views
WorkflowInstanceInfo	Modified	isGlobal()	Added	5.0	Global Create
WorkflowTaskInfo	Unchanged				
ModelRevision	Removed			5.0	History

v4.6 Model	Unchanged / Removed / Modified	Method	Added / Removed / Modified	Modified in 5.0 or 5.1	Impacted by
ResourceIdentifier	Modified	isCommunity()	Added	5.0	
ResourceIdentifier	Modified	isTerm()	Added	5.0	
ResourceIdentifier	Modified	isVocabulary()	Added	5.0	
ResourceIdentifier	Modified	toString()	Added	5.0	
RelationTraceFactory	Unchanged				
ComplexRelationImpl	Modified	ComplexRelationImpl(Builder)	Added	5.1	Complex Relation Type
ComplexRelationImpl	Modified	getAssetsFromLegs()	Added	5.1	Complex Relation Type
ComplexRelationImpl	Modified	getComplexRelationType()	Added	5.1	Complex Relation Type

v4.6 Model	Unchanged / Removed / Modified	Method	Added / Removed / Modified	Modified in 5.0 or 5.1	Impacted by
ComplexRelationImpl	Modified	getIdentifyingAssets()	Added	5.1	Complex Relation Type
ComplexRelationImpl	Modified	getLegs()	Added	5.1	Complex Relation Type
ComplexRelationImpl	Modified	getNaturalIdentifier()	Added	5.1	Complex Relation Type
ComplexRelationImpl	Modified	newBuilderForComplexRelation()	Added	5.1	Complex Relation Type
ComplexRelationImpl	Modified	setLegs()	Added	5.1	Complex Relation Type
ResourceIDUtils	Unchanged				
ProductModule	Removed			5.0	License

v4.6 Model	Unchanged / Removed / Modified	Method	Added / Removed / Modified	Modified in 5.0 or 5.1	Impacted by
ResourceType	Modified	getByInterfaceClass()	Added	5.0	
ArticulationRule.EOperation	Unchanged				
HyperlinkType	Unchanged				
Job.EState	Unchanged				
SyncAction	Unchanged				
AddressType	Unchanged				
Gender	Unchanged				
InstantMessagingAccountType	Unchanged				
PhoneType	Unchanged				
UserAuthenticationAction	Unchanged				

v4.6 Model	Unchanged / Removed / Modified	Method	Added / Removed / Modified	Modified in 5.0 or 5.1	Impacted by
WebsiteType	Unchanged				

Java DTO changes

v4.6 DTO	Unchanged / Removed / Modified	Method	Added / Removed / Modified	Modified in 5.0 or 5.1	Impacted by
TimeRange	Modified	isEndSet()	Added	5.0	
TimeRange	Modified	isStartSet()	Added	5.0	
TimeRange	Modified	setEnd()	Added	5.0	
TimeRange	Modified	setStart()	Added	5.0	
Activity	Removed			5.0	History
ActivityFilter	Modified	getMaxResults()	Removed	5.0	History
ActivityFilter	Modified	setMaxResults()	Removed	5.0	History
Change	Removed			5.0	History

v4.6 DTO	Unchanged / Removed / Modified	Method	Added / Removed / Modified	Modified in 5.0 or 5.1	Impacted by
ChangeType	Removed			5.0	History
RelationChange	Removed			5.0	History
BackupRestoreFilter	Removed			5.0	Infrastructure
ParentResourceElement	Unchanged				
CompareResult	Unchanged				
Difference	Unchanged				
DifferenceType	Unchanged				
PropertyDifference	Unchanged				
ResourceDifference	Unchanged				
ResultDiagram	Modified	moved to model package		5.1	Diagrams

v4.6 DTO	Unchanged / Removed / Modified	Method	Added / Removed / Modified	Modified in 5.0 or 5.1	Impacted by
ResultEdge	Modified	moved to model package		5.1	Diagrams
ResultNode	Modified	moved to model package		5.1	Diagrams
VisitDirection	Modified	moved to model package		5.1	Diagrams
VisitedTemplateEdge	Modified	moved to model package		5.1	Diagrams
TemplateDiagram	Modified	moved to model package		5.1	Diagrams
TemplateEdge	Modified	moved to model package		5.1	Diagrams
TemplateNode	Modified	moved to model package		5.1	Diagrams
PagedFilter	Unchanged				
PropertyFilter	Unchanged				
MatchMode	Unchanged				

v4.6 DTO	Unchanged / Removed / Modified	Method	Added / Removed / Modified	Modified in 5.0 or 5.1	Impacted by
AssetImpact	Unchanged				
AssetImpactBuilder	Unchanged				
GroupImpact	Unchanged				
ImpactRelationType	Unchanged				
PeopleImpact	Unchanged				
RelationTrace	Unchanged				
UserImpact	Unchanged				
ResourceChange	Unchanged				
ResourcePropertyChange	Unchanged				
CSVInputConnectorFactory	Unchanged				

v4.6 DTO	Unchanged / Removed / Modified	Method	Added / Removed / Modified	Modified in 5.0 or 5.1	Impacted by
CSVOutputConnectorFactory	Unchanged				
ExcellInputConnctorFactory	Unchanged				
ExcelOutputConnectorFactory	Unchanged				
GraphvizOutputConnectorFactory	Unchanged				
JSONDataTableOutputConnectorFactory	Unchanged				
JSONOutputConnectorFactory	Unchanged				
SqlOutputConnectorFactory	Unchanged				
XMLOutputConnectorFactory	Unchanged				
XssfRowContainer	Unchanged				
XssfStreamingExcellInputConnectorFactory	Unchanged				

v4.6 DTO	Unchanged / Removed / Modified	Method	Added / Removed / Modified	Modified in 5.0 or 5.1	Impacted by
IssueFilter	Unchanged				
JobFilter	Modified	getMaxVisibility()	Added	5.0	
JobFilter	Modified	setMaxVisibility()	Added	5.0	
LdapGroup	Unchanged				
LdapMappingConfig	Unchanged				
LdapUser	Unchanged				
JobMailItem	Unchanged				
MemberFilter	Modified	getOwnerIds()	Added	5.0	
MemberFilter	Modified	getResourceId()	Removed	5.0	
MemberFilter	Modified	getResourceIds()	Added	5.0	

v4.6 DTO	Unchanged / Removed / Modified	Method	Added / Removed / Modified	Modified in 5.0 or 5.1	Impacted by
MemberFilter	Modified	getRoleId()	Removed	5.0	
MemberFilter	Modified	getRoleIds()	Added	5.0	
MemberFilter	Modified	getUser()	Removed	5.0	
MemberFilter	Modified	getSortField()	Added	5.0	
MemberFilter	Modified	isGlobalOnly()	Added	5.0	
MemberFilter	Modified	isIncludeInherited()	Added	5.0	
MemberFilter	Modified	isResourceRole()	Removed	5.0	
MemberFilter	Modified	isSortAscending()	Added	5.0	
MemberFilter	Modified	setGlobalOnly()	Added	5.0	
MemberFilter	Modified	setIncludeInherited()	Added	5.0	

v4.6 DTO	Unchanged / Removed / Modified	Method	Added / Removed / Modified	Modified in 5.0 or 5.1	Impacted by
MemberFilter	Modified	setResourceRole()	Removed	5.0	
MemberFilter	Modified	setResourceRoles()	Added	5.0	
MemberFilter	Modified	setRoleId()	Removed	5.0	
MemberFilter	Modified	setRoleIds()	Added	5.0	
MemberFilter	Modified	setSortAscending()	Added	5.0	
MemberFilter	Modified	setSortField()	Added	5.0	
MemberFilter	Modified	setUser()	Removed	5.0	
Noun	Unchanged				
RelationFilter	Modified	forAllWithSource()	Added	5.1	
RelationFilter	Modified	forAllWithTarget()	Added	5.1	

v4.6 DTO	Unchanged / Removed / Modified	Method	Added / Removed / Modified	Modified in 5.0 or 5.1	Impacted by
RelationFilter	Modified	getFormula()	Added	5.0	
RelationFilter	Modified	newBuilder()	Added	5.1	
RelationFilter	Modified	setFormula()	Added	5.0	
ComplexRelationFilter	Modified	isConsiderViewPermissions	Added	5.1	
ComplexRelationFilter	Modified	setConsiderViewPermissions	Added	5.1	
PagedResult	Unchanged				
FoundAttribute	Unchanged				
FoundAttributeBuilder	Unchanged				
FoundComment	Unchanged				
FoundCommentBuiler	Unchanged				

v4.6 DTO	Unchanged / Removed / Modified	Method	Added / Removed / Modified	Modified in 5.0 or 5.1	Impacted by
FoundElement	Unchanged				
FoundElementBuilder	Unchanged				
FoundPart	Unchanged				
FoundPartBuilder	Unchanged				
FoundPartWithUrl	Unchanged				
SearchContext	Unchanged				
SearchFilter	Unchanged				
SearchFilterOnType	Unchanged				
SearchFilterOnTypeBuilder	Unchanged				
SearchOrder	Unchanged				

v4.6 DTO	Unchanged / Removed / Modified	Method	Added / Removed / Modified	Modified in 5.0 or 5.1	Impacted by
SearchParameters	Unchanged				
SearchParametersBuilder	Unchanged				
SearchResult	Unchanged				
SearchResultItem	Removed			5.0	
SearchResultItemBuilder	Removed			5.0	
FoundSimpleElement	Unchanged				
SearchForHyperlinksParameters	Unchanged				
SearchForHyperlinksParametersBuilder	Unchanged				
SearchForHyperlinksResult	Unchanged				
PropertyOrder	Unchanged				

v4.6 DTO	Unchanged / Removed / Modified	Method	Added / Removed / Modified	Modified in 5.0 or 5.1	Impacted by
CountOperation	Unchanged				
MetricFilter	Unchanged				
RealtimeCountConfig	Unchanged				
RealtimeCountDimension	Unchanged				
RealtimeCountFieldFilter	Unchanged				
RealtimeCountFilter	Unchanged				
RealtimeCountOrderBy	Unchanged				
RealtimeCountResource	Unchanged				
RealtimeCountResult	Unchanged				
StatisticDimension	Unchanged				

v4.6 DTO	Unchanged / Removed / Modified	Method	Added / Removed / Modified	Modified in 5.0 or 5.1	Impacted by
StatisticFilter	Unchanged				
RepresentationStatsEntry	Unchanged				
MappingInfo	Unchanged				
UserFilter	Unchanged				
UserInfo	Unchanged				
UserInfoBuilder	Unchanged				
Users	Unchanged				
AbstractModel	Unchanged				
AssetModel	Unchanged				
BasicAssetModel	Unchanged				

v4.6 DTO	Unchanged / Removed / Modified	Method	Added / Removed / Modified	Modified in 5.0 or 5.1	Impacted by
CommunityModel	Unchanged				
TermValidationInfo	Unchanged				
TermValidationResultFilter	Unchanged				
VocabularyModel	Unchanged				
ViewFilter	Modified	getDefaultView()	Added	5.0	Views
ViewFilter	Modified	getLimit()	Added	5.0	Views
ViewFilter	Modified	getOffset()	Added	5.0	Views
ViewFilter	Modified	getSortField()	Added	5.0	Views
ViewFilter	Modified	getSortOrder()	Added	5.0	Views
ViewFilter	Modified	getType()	Added	5.0	Views

v4.6 DTO	Unchanged / Removed / Modified	Method	Added / Removed / Modified	Modified in 5.0 or 5.1	Impacted by
ViewFilter	Modified	setDefaultView()	Added	5.0	Views
ViewFilter	Modified	setLimit()	Added	5.0	Views
ViewFilter	Modified	setOffset()	Added	5.0	Views
ViewFilter	Modified	setSortField()	Added	5.0	Views
ViewFilter	Modified	setSortOrder()	Added	5.0	Views
ViewFilter	Modified	setType()	Added	5.0	Views
ViewRightFilter	Unchanged				
DropDownValue	Unchanged				
FormData	Unchanged				
FormProperty	Unchanged				

v4.6 DTO	Unchanged / Removed / Modified	Method	Added / Removed / Modified	Modified in 5.0 or 5.1	Impacted by
ProcessInstance	Unchanged				
ProcessInstanceFilter	Unchanged				
StartFormData	Unchanged				
Task	Unchanged				
TaskFilter	Unchanged				
TaskFormData	Unchanged				
WorkflowEventType	Unchanged				
WorkflowExclusivity	Unchanged				
WorkflowStart	Unchanged				

Rest API changes

v4.6 Rest API	Unchanged / Removed / Modified	Method	Added / Removed / Modified	Modified in 5.0 or 5.1	Impacted by
ActivityStreamResource	Removed			5.0	History
ApplicationResource	Unchanged				
ArticulationResource	Modified	DELETE, GET, POST /1.0/articulation_calculator	Removed	5.1	Assignment
ArticulationResource	Modified	GET /1.0/articulation_calculator/all	Removed	5.1	Assignment
ArticulationResource	Modified	DELETE, GET, POST /1.0/articulation_calculator/{calculator}	Removed	5.1	Assignment
ArticulationResource	Modified	POST /1.0/articulation_calculator/{calculator}/articulation_rule	Removed	5.1	Assignment

v4.6 Rest API	Unchanged / Removed / Modified	Method	Added / Removed / Modified	Modified in 5.0 or 5.1	Impacted by
ArticulationResource	Modified	POST /1.0/articulation_calculator/ {calculator}/articulation_rules	Removed	5.1	Assignment
ArticulationResource	Modified	POST /1.0/articulation_calculator/ {calculator}/assignment_rule	Removed	5.1	Assignment
ArticulationResource	Modified	POST /1.0/articulation_calculator/ {calculator}/assignment_rules	Removed	5.1	Assignment
ArticulationResource	Modified	DELETE, POST /1.0/articulation_ calculator/{calculator}/articulation_ rule/{rule}	Removed	5.1	Assignment
ArticulationResource	Modified	DELETE, POST /1.0/articulation_ calculator/{calculator}/assignment_ rule/{rule}	Removed	5.1	Assignment
AssignmentGroupResource	Removed			5.1	Assignment

v4.6 Rest API	Unchanged / Removed / Modified	Method	Added / Removed / Modified	Modified in 5.0 or 5.1	Impacted by
AttachmentResource	Unchanged				
AttributeResource	Unchanged				
AttributeTypeGroupResource	Removed			5.1	Assignment
AttributeTypeResource	Modified	POST /1.0/attribute_type/- workflows	Removed	5.1	Representation
AttributeTypeResource	Modified	DELETE, GET, POST /1.0/at- tribute_type/{attributeType}	Removed	5.1	Representation
AttributeTypeResource	Modified	POST /1.0/attribute_type/concept_ type/async	Removed	5.1	Representation
AttributeTypeResource	Modified	POST /1.0/attribute_type/general_ concept/async	Removed	5.1	Representation

v4.6 Rest API	Unchanged / Removed / Modified	Method	Added / Removed / Modified	Modified in 5.0 or 5.1	Impacted by
AttributeTypeResource	Modified	DELETE /1.0/attribute_type/re- move/async	Removed	5.1	Representation
AttributeTypeResource	Modified	DELETE /1.0/attribute_type/re- move/job	Removed	5.1	Representation
AttributeTypeResource	Modified	POST /1.0/attribute_type/status/a- sync	Removed	5.1	Representation
AttributeTypeResource	Modified	POST /1.0/attribute_type/- vocabulary/async	Removed	5.1	Representation
AttributeTypeResource	Modified	POST /1.0/attribute_type/{baseRe- source}/attachment	Removed	5.1	Representation
AttributeTypeResource	Modified	GET /1.0/attribute_type/{baseRe- source}/attachments	Removed	5.1	Representation

v4.6 Rest API	Unchanged / Removed / Modified	Method	Added / Removed / Modified	Modified in 5.0 or 5.1	Impacted by
AttributeTypeResource	Modified	GET /1.0/attribute_type/{baseResource}/comments	Removed	5.1	Representation
AttributeTypeResource	Modified	GET /1.0/attribute_type/{representation}/all_specialized_concepts	Removed	5.1	Representation
AttributeTypeResource	Modified	GET, POST /1.0/attribute_type/{representation}/attributes	Removed	5.1	Representation
AttributeTypeResource	Modified	POST /1.0/attribute_type/{representation}/change_excluded_from_hyperlinking	Removed	5.1	Representation
AttributeTypeResource	Modified	GET, POST /1.0/attribute_type/{representation}/concept_type	Removed	5.1	Representation

v4.6 Rest API	Unchanged / Removed / Modified	Method	Added / Removed / Modified	Modified in 5.0 or 5.1	Impacted by
AttributeTypeResource	Modified	DELETE, POST /1.0/attribute_type/{representation}/general_concept	Removed	5.1	Representation
AttributeTypeResource	Modified	GET /1.0/attribute_type/{representation}/general_concepts	Removed	5.1	Representation
AttributeTypeResource	Modified	GET /1.0/attribute_type/{representation}/group_attributes	Removed	5.1	Representation
AttributeTypeResource	Modified	GET /1.0/attribute_type/{representation}/groups	Removed	5.1	Representation
AttributeTypeResource	Modified	GET /1.0/attribute_type/{representation}/has_general_concept	Removed	5.1	Representation

v4.6 Rest API	Unchanged / Removed / Modified	Method	Added / Removed / Modified	Modified in 5.0 or 5.1	Impacted by
AttributeTypeResource	Modified	GET /1.0/attribute_type/{representation}/possible_attribute_relation_types	Removed	5.1	Representation
AttributeTypeResource	Modified	GET /1.0/attribute_type/{representation}/possible_attribute_types	Removed	5.1	Representation
AttributeTypeResource	Modified	GET /1.0/attribute_type/{representation}/possible_statuses	Removed	5.1	Representation
AttributeTypeResource	Modified	GET, POST /1.0/attribute_type/{representation}/status	Removed	5.1	Representation
AttributeTypeResource	Modified	GET /1.0/attribute_type/{representation}/vocabulary	Removed	5.1	Representation

v4.6 Rest API	Unchanged / Removed / Modified	Method	Added / Removed / Modified	Modified in 5.0 or 5.1	Impacted by
AttributeTypeResource	Modified	GET /1.0/attribute_type/{representation}/workflows	Removed	5.1	Representation
AttributeTypeResource	Modified	POST /1.0/attribute_type/{resource}/comment	Removed	5.1	Representation
AttributeTypeResource	Modified	GET /1.0/attribute_type/{term}/binary_fact_type_forms	Removed	5.1	Representation
AttributeTypeResource	Modified	GET /1.0/attribute_type/{term}/derived_facts	Removed	5.1	Representation
AttributeTypeResource	Modified	GET /1.0/attribute_type/{term}/general_concept	Removed	5.1	Representation
AttributeTypeResource	Modified	GET /1.0/attribute_type/{term}/possible_object_types	Removed	5.1	Representation

v4.6 Rest API	Unchanged / Removed / Modified	Method	Added / Removed / Modified	Modified in 5.0 or 5.1	Impacted by
AttributeTypeResource	Modified	POST /1.0/attribute_type/{term}/relations	Removed	5.1	Representation
AttributeTypeResource	Modified	GET /1.0/attribute_type/{term}/source_relations	Removed	5.1	Representation
AttributeTypeResource	Modified	GET /1.0/attribute_type/{term}/specialized_concepts	Removed	5.1	Representation
AttributeTypeResource	Modified	GET /1.0/attribute_type/{term}/target_relations	Removed	5.1	Representation
AttributeTypeResource	Modified	POST /1.0/attribute_type/{baseResource}/attachment/url	Removed	5.1	Representation
AttributeTypeResource	Modified	GET /1.0/attribute_type/{term}/binary_fact_type_forms/full	Removed	5.1	Representation

v4.6 Rest API	Unchanged / Removed / Modified	Method	Added / Removed / Modified	Modified in 5.0 or 5.1	Impacted by
AttributeTypeResource	Modified	GET /1.0/attribute_type/{term}/derived_facts/full	Removed	5.1	Representation
BackupResource	Removed			5.0	Infrastructure
BinaryFactTypeResource	Removed			5.1	Representation
ClassificationResource	Removed			5.1	Categorization
CommentResource	Unchanged				
CommunityResource	Unchanged				
ComplexRelationResource	Unchanged				
ComplexRelationTypeResource	Modified	POST /1.0/complex_relation_type/{complexRelationType}/attribute_type_container	Removed	5.1	Complex Relation Type

v4.6 Rest API	Unchanged / Removed / Modified	Method	Added / Removed / Modified	Modified in 5.0 or 5.1	Impacted by
ComplexRelationTypeResource	Modified	GET, POST /1.0/complex_relation_type/{complexRelationType}/attribute_type_containers	Removed	5.1	Complex Relation Type
ComplexRelationTypeResource	Modified	DELETE /1.0/complex_relation_type/{complexRelationType}/container	Removed	5.1	Complex Relation Type
ComplexRelationTypeResource	Modified	POST /1.0/complex_relation_type/{complexRelationType}/relation_type_container	Removed	5.1	Complex Relation Type
ComplexRelationTypeResource	Modified	GET, POST /1.0/complex_relation_type/{complexRelationType}/relation_type_containers	Removed	5.1	Complex Relation Type

v4.6 Rest API	Unchanged / Removed / Modified	Method	Added / Removed / Modified	Modified in 5.0 or 5.1	Impacted by
ConceptTypeGroupResource	Removed			5.1	Assignment
ConceptTypeResource	Modified	GET /1.0/concept_type/vocabulary	Removed	5.1	Representation
ConceptTypeResource	Modified	POST /1.0/concept_type/workflows	Removed	5.1	Representation
ConceptTypeResource	Modified	GET /1.0/concept_type/ {assetType}/general_concepts	Added	5.1	Representation
ConceptTypeResource	Modified	DELETE /1.0/concept_type/{rep- resentation}	Removed	5.1	Representation
ConceptTypeResource	Modified	POST /1.0/concept_type/concept_ type/async	Removed	5.1	Representation
ConceptTypeResource	Modified	POST /1.0/concept_type/general_ concept/async	Removed	5.1	Representation

v4.6 Rest API	Unchanged / Removed / Modified	Method	Added / Removed / Modified	Modified in 5.0 or 5.1	Impacted by
ConceptTypeResource	Modified	DELETE /1.0/concept_type/re- move/async	Removed	5.1	Representation
ConceptTypeResource	Modified	DELETE /1.0/concept_type/re- move/job	Removed	5.1	Representation
ConceptTypeResource	Modified	POST /1.0/concept_type/status/a- sync	Removed	5.1	Representation
ConceptTypeResource	Modified	POST /1.0/concept_type/- vocabulary/async	Removed	5.1	Representation
ConceptTypeResource	Modified	POST /1.0/concept_type/{baseRe- source}/attachment	Removed	5.1	Representation
ConceptTypeResource	Modified	GET /1.0/concept_type/{baseRe- source}/attachments	Removed	5.1	Representation

v4.6 Rest API	Unchanged / Removed / Modified	Method	Added / Removed / Modified	Modified in 5.0 or 5.1	Impacted by
ConceptTypeResource	Modified	GET /1.0/concept_type/{baseResource}/comments	Removed	5.1	Representation
ConceptTypeResource	Modified	GET /1.0/concept_type/{representation}/all_specialized_concepts	Removed	5.1	Representation
ConceptTypeResource	Modified	GET, POST /1.0/concept_type/{representation}/attributes	Removed	5.1	Representation
ConceptTypeResource	Modified	POST /1.0/concept_type/{representation}/change_excluded_from_hyperlinking	Removed	5.1	Representation
ConceptTypeResource	Modified	POST /1.0/concept_type/{representation}/concept_type	Removed	5.1	Representation

v4.6 Rest API	Unchanged / Removed / Modified	Method	Added / Removed / Modified	Modified in 5.0 or 5.1	Impacted by
ConceptTypeResource	Modified	DELETE, POST /1.0/concept_type/ {representation}/general_concept	Removed	5.1	Representation
ConceptTypeResource	Modified	GET /1.0/concept_type/{rep- resentation}/general_concepts	Removed	5.1	Representation
ConceptTypeResource	Modified	GET /1.0/concept_type/{rep- resentation}/group_attributes	Removed	5.1	Representation
ConceptTypeResource	Modified	GET /1.0/concept_type/{rep- resentation}/groups	Removed	5.1	Representation
ConceptTypeResource	Modified	GET /1.0/concept_type/{rep- resentation}/has_general_concept	Removed	5.1	Representation
ConceptTypeResource	Modified	GET /1.0/concept_type/{rep- resentation}/possible_attribute_ relation_types	Removed	5.1	Representation

v4.6 Rest API	Unchanged / Removed / Modified	Method	Added / Removed / Modified	Modified in 5.0 or 5.1	Impacted by
ConceptTypeResource	Modified	GET /1.0/concept_type/{representation}/possible_attribute_types	Removed	5.1	Representation
ConceptTypeResource	Modified	GET /1.0/concept_type/{representation}/possible_statuses	Removed	5.1	Representation
ConceptTypeResource	Modified	POST, GET /1.0/concept_type/{representation}/status	Removed	5.1	Representation
ConceptTypeResource	Modified	GET /1.0/concept_type/{representation}/vocabulary	Removed	5.1	Representation
ConceptTypeResource	Modified	GET /1.0/concept_type/{representation}/workflows	Removed	5.1	Representation
ConceptTypeResource	Modified	POST /1.0/concept_type/{resource}/comment	Removed	5.1	Representation

v4.6 Rest API	Unchanged / Removed / Modified	Method	Added / Removed / Modified	Modified in 5.0 or 5.1	Impacted by
ConceptTypeResource	Modified	GET /1.0/concept_type/{term}/binary_fact_type_forms	Removed	5.1	Representation
ConceptTypeResource	Modified	GET /1.0/concept_type/{term}/derived_facts	Removed	5.1	Representation
ConceptTypeResource	Modified	GET /1.0/concept_type/{term}/general_concept	Removed	5.1	Representation
ConceptTypeResource	Modified	GET /1.0/concept_type/{term}/possible_object_types	Removed	5.1	Representation
ConceptTypeResource	Modified	POST /1.0/concept_type/{term}/relations	Removed	5.1	Representation
ConceptTypeResource	Modified	GET /1.0/concept_type/{term}/source_relations	Removed	5.1	Representation

v4.6 Rest API	Unchanged / Removed / Modified	Method	Added / Removed / Modified	Modified in 5.0 or 5.1	Impacted by
ConceptTypeResource	Modified	GET /1.0/concept_type/{term}/specialized_concepts	Removed	5.1	Representation
ConceptTypeResource	Modified	GET /1.0/concept_type/{term}/target_relations	Removed	5.1	Representation
ConceptTypeResource	Modified	POST /1.0/concept_type/{baseResource}/attachment/url	Removed	5.1	Representation
ConceptTypeResource	Modified	GET /1.0/concept_type/{term}/binary_fact_type_forms/full	Removed	5.1	Representation
ConceptTypeResource	Modified	GET /1.0/concept_type/{term}/derived_facts/full	Removed	5.1	Representation
ConfigurationResource	Removed			5.0	Configuration
DatabaseResource	Removed			5.0	Infrastructure

v4.6 Rest API	Unchanged / Removed / Modified	Method	Added / Removed / Modified	Modified in 5.0 or 5.1	Impacted by
FileTransferResource	Unchanged				
GroupResource	Unchanged				
HyperlinkResource	Unchanged				
I18NResource	Unchanged				
ImpactResource	Unchanged				
InitializeResource	Modified	POST /1.0/initialize/bootstrap	Removed	5.0	Infrastructure
InitializeResource	Modified	POST /1.0/initialize/init	Removed	5.0	Infrastructure
InitializeResource	Modified	POST /1.0/initialize/bootstrap/create	Removed	5.0	Infrastructure
InputViewResource	Unchanged				

v4.6 Rest API	Unchanged / Removed / Modified	Method	Added / Removed / Modified	Modified in 5.0 or 5.1	Impacted by
IssueResource	Unchanged				
JobResource	Unchanged				
LdapResource	Unchanged				
LicenseResource	Removed			5.1	License
LogResource	Unchanged				
MappingResource	Unchanged				
MemberResource	Unchanged				
MetricGroupResource	Removed			5.1	Assignment
NounExtractorResource	Unchanged				
OfficeResearchResource	Unchanged				

v4.6 Rest API	Unchanged / Removed / Modified	Method	Added / Removed / Modified	Modified in 5.0 or 5.1	Impacted by
OutputViewResource	Unchanged				
RelationResource	Modified	POST /1.0/relation/{relation}/status	Removed	5.1	Representation
RelationResource	Modified	GET /1.0/relation/{relation}/possible_statuses	Removed	5.1	Representation
RelationTypeResource	Unchanged				
RoleResource	Unchanged				
RootResource	Removed			5.0	
SamlMetadataResource	Modified	POST /1.0/saml/metadata	Removed	5.0	
SearchResource	Modified	GET /1.0/search	Removed	5.0	
SnapshotConfigurationResource	Removed			5.1	Snapshots

v4.6 Rest API	Unchanged / Removed / Modified	Method	Added / Removed / Modified	Modified in 5.0 or 5.1	Impacted by
SnapshotResource	Removed			5.1	Snapshots
StatisticResource	Unchanged				
StatusGroupResource	Removed				
StatusResource	Modified	GET /1.0/status/signifier	Added	5.0	Representation
StatusResource	Modified	GET /1.0/status/vocabulary	Removed	5.1	Representation
StatusResource	Modified	POST /1.0/status/workflows	Removed	5.1	Representation
StatusResource	Modified	POST /1.0/status/concept_type/a- sync	Removed	5.1	Representation
StatusResource	Modified	POST /1.0/status/general_con- cept/async	Removed	5.1	Representation
StatusResource	Modified	DELETE /1.0/status/remove/async	Removed	5.1	Representation

v4.6 Rest API	Unchanged / Removed / Modified	Method	Added / Removed / Modified	Modified in 5.0 or 5.1	Impacted by
StatusResource	Modified	DELETE /1.0/status/remove/job	Removed	5.1	Representation
StatusResource	Modified	POST /1.0/status/status/async	Removed	5.1	Representation
StatusResource	Modified	POST /1.0/status/- vocabulary/async	Removed	5.1	Representation
StatusResource	Modified	POST /1.0/status/{baseRe- source}/attachment	Removed	5.1	Representation
StatusResource	Modified	GET /1.0/status/{baseRe- source}/attachments	Removed	5.1	Representation
StatusResource	Modified	GET /1.0/status/{baseRe- source}/comments	Removed	5.1	Representation

v4.6 Rest API	Unchanged / Removed / Modified	Method	Added / Removed / Modified	Modified in 5.0 or 5.1	Impacted by
StatusResource	Modified	GET /1.0/status/{representation}/all_specialized_concepts	Removed	5.1	Representation
StatusResource	Modified	GET, POST /1.0/status/{representation}/attributes	Removed	5.1	Representation
StatusResource	Modified	POST /1.0/status/{representation}/change_excluded_from_hyperlinking	Removed	5.1	Representation
StatusResource	Modified	GET, POST /1.0/status/{representation}/concept_type	Removed	5.1	Representation
StatusResource	Modified	DELETE, POST /1.0/status/{representation}/general_concept	Removed	5.1	Representation

v4.6 Rest API	Unchanged / Removed / Modified	Method	Added / Removed / Modified	Modified in 5.0 or 5.1	Impacted by
StatusResource	Modified	GET /1.0/status/{representation}/general_concepts	Removed	5.1	Representation
StatusResource	Modified	GET /1.0/status/{representation}/group_attributes	Removed	5.1	Representation
StatusResource	Modified	GET /1.0/status/{representation}/groups	Removed	5.1	Representation
StatusResource	Modified	GET /1.0/status/{representation}/has_general_concept	Removed	5.1	Representation
StatusResource	Modified	GET /1.0/status/{representation}/possible_attribute_relation_types	Removed	5.1	Representation

v4.6 Rest API	Unchanged / Removed / Modified	Method	Added / Removed / Modified	Modified in 5.0 or 5.1	Impacted by
StatusResource	Modified	GET /1.0/status/{representation}/possible_attribute_types	Removed	5.1	Representation
StatusResource	Modified	GET /1.0/status/{representation}/possible_statuses	Removed	5.1	Representation
StatusResource	Modified	POST /1.0/status/{representation}/status	Removed	5.1	Representation
StatusResource	Modified	GET /1.0/status/{representation}/vocabulary	Removed	5.1	Representation
StatusResource	Modified	GET /1.0/status/{representation}/workflows	Removed	5.1	Representation
StatusResource	Modified	POST /1.0/status/{resource}/-comment	Removed	5.1	Representation

v4.6 Rest API	Unchanged / Removed / Modified	Method	Added / Removed / Modified	Modified in 5.0 or 5.1	Impacted by
StatusResource	Modified	GET /1.0/status/{term}/binary_ fact_type_forms	Removed	5.1	Representation
StatusResource	Modified	GET /1.0/status/{term}/derived_ facts	Removed	5.1	Representation
StatusResource	Modified	GET /1.0/status/{term}/general_ concept	Removed	5.1	Representation
StatusResource	Modified	GET /1.0/status/{term}/possible_ object_types	Removed	5.1	Representation
StatusResource	Modified	POST /1.0/status/{term}/relations	Removed	5.1	Representation
StatusResource	Modified	POST /1.0/status/{term}/signifier	Removed	5.1	Representation
StatusResource	Modified	GET /1.0/status/{term}/source_rela- tions	Removed	5.1	Representation

v4.6 Rest API	Unchanged / Removed / Modified	Method	Added / Removed / Modified	Modified in 5.0 or 5.1	Impacted by
StatusResource	Modified	GET /1.0/status/{term}/specialized_concepts	Removed	5.1	Representation
StatusResource	Modified	GET /1.0/status/{term}/target_relations	Removed	5.1	Representation
StatusResource	Modified	POST /1.0/status/{baseResource}/attachment/url	Removed	5.1	Representation
StatusResource	Modified	GET /1.0/status/{term}/binary_fact_type_forms/full	Removed	5.1	Representation
StatusResource	Modified	GET /1.0/status/{term}/derived_facts/full	Removed	5.1	Representation
SyncIBMResource	Removed			5.0	Integrations
SyncTrilliumResource	Removed			5.0	Integrations

v4.6 Rest API	Unchanged / Removed / Modified	Method	Added / Removed / Modified	Modified in 5.0 or 5.1	Impacted by
TermResource	Modified	POST /1.0/term/categorization_ type	Removed	5.1	Categorization
TermResource	Modified	POST /1.0/term/category	Removed	5.1	Categorization
TermResource	Modified	GET /1.0/{gen- eralConcept}/category	Removed	5.1	Categorization
TermResource	Modified	GET /1.0/{gen- eralConcept}/category/full	Removed	5.1	Categorization
TermResource	Modified	GET /1.0/{gen- eralConcept}/categorization_type	Removed	5.1	Categorization
TermResource	Modified	GET /1.0/{gen- eralConcept}/categorization_type/- full	Removed	5.1	Categorization

v4.6 Rest API	Unchanged / Removed / Modified	Method	Added / Removed / Modified	Modified in 5.0 or 5.1	Impacted by
TermResource	Modified	GET /1.0/{term}/is_categorization_type	Removed	5.1	Categorization
TermResource	Modified	POST /1.0/{category}/categorization_type	Removed	5.1	Categorization
TermResource	Modified	POST /1.0/categorization_type	Removed	5.1	Categorization
TermResource	Modified	DELETE /1.0/category/{category}	Removed	5.1	Categorization
TermResource	Modified	DELETE /1.0/{generalconcept}/categorization_type/{categorizationtype}	Removed	5.1	Categorization
TraceabilityGroupResource	Removed			5.0	Assignment
UserResource	Unchanged				

v4.6 Rest API	Unchanged / Removed / Modified	Method	Added / Removed / Modified	Modified in 5.0 or 5.1	Impacted by
ValidationGroupResource	Removed			5.1	Assignment
ValidationResource	Unchanged				
ViewResource	Unchanged				
ViewRightResource	Unchanged				
VocabularyResource	Modified	GET /1.0/{vocabulary}/groups	Removed	5.0	Assignment
VocabularyResource	Modified	GET /1.0/{vocabulary}/possible_ relation_types	Modified	5.1	Representation
VocabularyResource	Modified	GET /1.0/{vocabulary}/relation_ types	Removed	5.1	Representation
VocabularyResource	Modified	GET /1.0/{vocabulary}/possible_ attribute_types	Modified	5.1	Representation

v4.6 Rest API	Unchanged / Removed / Modified	Method	Added / Removed / Modified	Modified in 5.0 or 5.1	Impacted by
VocabularyResource	Modified	GET /1.0/{vocabulary}/possible_ fact_types	Removed	5.1	Representation
VocabularyResource	Modified	GET /1.0/{vocabulary}/binary_fact_ types	Removed	5.1	Representation
VocabularyResource	Modified	GET /1.0/{vocabulary}/binary_fact_ types/full	Removed	5.1	Representation
VocabularyResource	Modified	POST /1.0/{vocabulary}/naming_ rule	Removed	5.0	Naming Rule
VocabularyTypeResource	Modified	GET /1.0/vocabulary_type/- vocabulary	Removed	5.1	Representation
VocabularyTypeResource	Modified	POST /1.0/vocabulary_type/- workflows	Removed	5.1	Representation

v4.6 Rest API	Unchanged / Removed / Modified	Method	Added / Removed / Modified	Modified in 5.0 or 5.1	Impacted by
VocabularyTypeResource	Modified	DELETE /1.0/vocabulary_type/{representation}	Removed	5.1	Representation
VocabularyTypeResource	Modified	POST /1.0/vocabulary_type/-concept_type/async	Removed	5.1	Representation
VocabularyTypeResource	Modified	POST /1.0/vocabulary_type/-general_concept/async	Removed	5.1	Representation
VocabularyTypeResource	Modified	DELETE /1.0/vocabulary_type/remove/async	Removed	5.1	Representation
VocabularyTypeResource	Modified	DELETE /1.0/vocabulary_type/remove/job	Removed	5.1	Representation
VocabularyTypeResource	Modified	POST /1.0/vocabulary_type/status/async	Removed	5.1	Representation

v4.6 Rest API	Unchanged / Removed / Modified	Method	Added / Removed / Modified	Modified in 5.0 or 5.1	Impacted by
VocabularyTypeResource	Modified	POST /1.0/vocabulary_type/- vocabulary/async	Removed	5.1	Representation
VocabularyTypeResource	Modified	POST /1.0/vocabulary_type/ {baseResource}/attachment	Removed	5.1	Representation
VocabularyTypeResource	Modified	GET /1.0/vocabulary_type/ {baseResource}/attachments	Removed	5.1	Representation
VocabularyTypeResource	Modified	GET /1.0/vocabulary_type/ {baseResource}/comments	Removed	5.1	Representation
VocabularyTypeResource	Modified	GET /1.0/vocabulary_type/{rep- resentation}/all_specialized_con- cepts	Removed	5.1	Representation
VocabularyTypeResource	Modified	GET, POST /1.0/vocabulary_type/ {representation}/attributes	Removed	5.1	Representation

v4.6 Rest API	Unchanged / Removed / Modified	Method	Added / Removed / Modified	Modified in 5.0 or 5.1	Impacted by
VocabularyTypeResource	Modified	POST /1.0/vocabulary_type/{representation}/change_excluded_from_hyperlinking	Removed	5.1	Representation
VocabularyTypeResource	Modified	GET, POST /1.0/vocabulary_type/{representation}/concept_type	Removed	5.1	Representation
VocabularyTypeResource	Modified	DELETE, POST /1.0/vocabulary_type/{representation}/general_concept	Removed	5.1	Representation
VocabularyTypeResource	Modified	GET /1.0/vocabulary_type/{representation}/general_concepts	Removed	5.1	Representation
VocabularyTypeResource	Modified	GET /1.0/vocabulary_type/{representation}/group_attributes	Removed	5.1	Representation

v4.6 Rest API	Unchanged / Removed / Modified	Method	Added / Removed / Modified	Modified in 5.0 or 5.1	Impacted by
VocabularyTypeResource	Modified	GET /1.0/vocabulary_type/{representation}/groups	Removed	5.1	Representation
VocabularyTypeResource	Modified	GET /1.0/vocabulary_type/{representation}/has_general_concept	Removed	5.1	Representation
VocabularyTypeResource	Modified	GET /1.0/vocabulary_type/{representation}/possible_attribute_relation_types	Removed	5.1	Representation
VocabularyTypeResource	Modified	GET /1.0/vocabulary_type/{representation}/possible_attribute_types	Removed	5.1	Representation
VocabularyTypeResource	Modified	GET /1.0/vocabulary_type/{representation}/possible_statuses	Removed	5.1	Representation

v4.6 Rest API	Unchanged / Removed / Modified	Method	Added / Removed / Modified	Modified in 5.0 or 5.1	Impacted by
VocabularyTypeResource	Modified	GET, POST /1.0/vocabulary_type/ {representation}/status	Removed	5.1	Representation
VocabularyTypeResource	Modified	GET /1.0/vocabulary_type/{rep- resentation}/vocabulary	Removed	5.1	Representation
VocabularyTypeResource	Modified	GET /1.0/vocabulary_type/{rep- resentation}/workflows	Removed	5.1	Representation
VocabularyTypeResource	Modified	POST /1.0/vocabulary_type/ {resource}/comment	Removed	5.1	Representation
VocabularyTypeResource	Modified	GET /1.0/vocabulary_type/{ter- m}/binary_fact_type_forms	Removed	5.1	Representation
VocabularyTypeResource	Modified	GET /1.0/vocabulary_type/{ter- m}/derived_facts	Removed	5.1	Representation

v4.6 Rest API	Unchanged / Removed / Modified	Method	Added / Removed / Modified	Modified in 5.0 or 5.1	Impacted by
VocabularyTypeResource	Modified	GET /1.0/vocabulary_type/{term}/general_concept	Removed	5.1	Representation
VocabularyTypeResource	Modified	POST /1.0/vocabulary_type/{term}/relations	Removed	5.1	Representation
VocabularyTypeResource	Modified	POST /1.0/vocabulary_type/{term}/signifier	Removed	5.1	Representation
VocabularyTypeResource	Modified	GET /1.0/vocabulary_type/{term}/source_relations	Removed	5.1	Representation
VocabularyTypeResource	Modified	GET /1.0/vocabulary_type/{term}/specialized_concepts	Removed	5.1	Representation
VocabularyTypeResource	Modified	GET /1.0/vocabulary_type/{term}/target_relations	Removed	5.1	Representation

v4.6 Rest API	Unchanged / Removed / Modified	Method	Added / Removed / Modified	Modified in 5.0 or 5.1	Impacted by
VocabularyTypeResource	Modified	POST /1.0/vocabulary_type/ {baseResource}/attachment/url	Removed	5.1	Representation
VocabularyTypeResource	Modified	GET /1.0/vocabulary_type/{ter- m}/binary_fact_type_forms/full	Removed	5.1	Representation
VocabularyTypeResource	Modified	GET /1.0/vocabulary_type/{ter- m}/derived_facts/full	Removed	5.1	Representation
WorkflowResource	Modified	GET /1.0/workflow/general_con- cept/async	Removed	5.1	Representation
WorkflowResource	Modified	GET /1.0/workflow/{rep- resentation}/all_specialized_con- cepts	Removed	5.1	Representation
WorkflowResource	Modified	GET /1.0/workflow/{rep- resentation}/general_concept	Removed	5.1	Representation

v4.6 Rest API	Unchanged / Removed / Modified	Method	Added / Removed / Modified	Modified in 5.0 or 5.1	Impacted by
WorkflowResource	Modified	GET /1.0/workflow/{representation}/general_concepts	Removed	5.1	Representation
WorkflowResource	Modified	GET /1.0/workflow/{representation}/group_attributes	Removed	5.1	Representation
WorkflowResource	Modified	GET /1.0/workflow/{representation}/groups	Removed	5.1	Representation
WorkflowResource	Modified	GET /1.0/workflow/{representation}/has_general_concept	Removed	5.1	Representation
WorkflowResource	Modified	GET /1.0/workflow/{term}/binary_fact_type_forms	Removed	5.1	Representation
WorkflowResource	Modified	GET /1.0/workflow/{term}/derived_facts	Removed	5.1	Representation

v4.6 Rest API	Unchanged / Removed / Modified	Method	Added / Removed / Modified	Modified in 5.0 or 5.1	Impacted by
WorkflowResource	Modified	GET /1.0/workflow/{term}/general_ concept	Removed	5.1	Representation
WorkflowResource	Modified	GET /1.0/workflow/{term}/possible_ object_ types	Removed	5.1	Representation
WorkflowResource	Modified	GET /1.0/workflow/{term}/specialized_ concepts	Removed	5.1	Representation
WorkflowResource	Modified	GET /1.0/workflow/{term}/binary_ fact_ type_ forms/full	Removed	5.1	Representation
WorkflowResource	Modified	GET /1.0/workflow/{term}/derived_ facts/full	Removed	5.1	Representation

Rest Model changes

v4.6 Rest Model	Unchanged / Removed / Modified	Method	Added / Removed / Modified	Modified in 5.0 or 5.1	Impacted by
Activity	Unchanged				
ActivityStream	Unchanged				
Adapter1	Unchanged				
Address	Unchanged				
AddressCollection	Unchanged				
AddressType	Unchanged				
ArticulationCalculator	Removed			5.1	Assignment
ArticulationCalculatorReference	Removed			5.1	Assignment

v4.6 Rest Model	Unchanged / Removed / Modified	Method	Added / Removed / Modified	Modified in 5.0 or 5.1	Impacted by
ArticulationCalculators	Removed			5.1	Assignment
ArticulationOperator	Removed			5.1	Assignment
ArticulationRule	Removed			5.1	Assignment
ArticulationRuleCollection	Removed			5.1	Assignment
AssetImpact	Unchanged				
AssetImpacts	Unchanged				
AssignmentGroup	Removed			5.1	Assignment
AssignmentGroupReference	Removed			5.1	Assignment
AssignmentGroups	Removed			5.1	Assignment
AssignmentRule	Unchanged				

v4.6 Rest Model	Unchanged / Removed / Modified	Method	Added / Removed / Modified	Modified in 5.0 or 5.1	Impacted by
AssignmentRules	Unchanged				
Attachment	Unchanged				
Attachments	Unchanged				
Attribute	Unchanged				
AttributeReference	Unchanged				
AttributeReferences	Unchanged				
Attributes	Unchanged				
AttributeType	Unchanged				
AttributeTypeContainer	Removed			5.1	Assignment
AttributeTypeGroup	Removed			5.1	Assignment

v4.6 Rest Model	Unchanged / Removed / Modified	Method	Added / Removed / Modified	Modified in 5.0 or 5.1	Impacted by
AttributeTypes	Unchanged				
AuthorizationException	Unchanged				
BinaryFactType	Modified	withAttributeReferences()	Added	5.0	Representation
BinaryFactType	Modified	withConceptType	Added	5.0	Representation
BinaryFactType	Modified	withGeneralConceptReference	Removed	5.1	Representation
BinaryFactType	Modified	withSpecializedConceptReferences	Removed	5.1	Representation
BinaryFactType	Modified	withStatusReference	Removed	5.1	Representation
BinaryFactType	Modified	withVocabularyReference	Removed	5.1	Representation
BinaryFactTypeReference	Removed			5.1	Representation

v4.6 Rest Model	Unchanged / Removed / Modified	Method	Added / Removed / Modified	Modified in 5.0 or 5.1	Impacted by
BinaryFactTypeReferences	Removed			5.1	Representation
BinaryFactTypes	Unchanged				
BooleanAttribute	Unchanged				
BooleanAttributeReference	Unchanged				
BooleanResponse	Unchanged				
CancelProcessResponse	Unchanged				
CancelProcessResponseEntry	Unchanged				
CancelTaskResponse	Unchanged				
Change	Unchanged				
Comment	Unchanged				

v4.6 Rest Model	Unchanged / Removed / Modified	Method	Added / Removed / Modified	Modified in 5.0 or 5.1	Impacted by
Comments	Unchanged				
Communities	Unchanged				
Community	Unchanged				
CommunityCachedElementResource	Unchanged				
Com- munityCachedElementsCollection	Unchanged				
CommunityReference	Unchanged				
CommunityReferences	Unchanged				
CompleteTaskResponse	Unchanged				
ComplexRelationTypeGroup	Removed			5.1	Assignment

v4.6 Rest Model	Unchanged / Removed / Modified	Method	Added / Removed / Modified	Modified in 5.0 or 5.1	Impacted by
ConceptTypeContainer	Removed			5.1	Assignment
ConceptTypeGroup	Removed			5.1	Assignment
ConfigProperty	Unchanged				
Configuration	Unchanged				
DateAttribute	Unchanged				
DateAttributeReference	Unchanged				
DateTimeAttribute	Unchanged				
DateTimeAttributeReference	Unchanged				
DgcException	Unchanged				
DropdownValue	Unchanged				

v4.6 Rest Model	Unchanged / Removed / Modified	Method	Added / Removed / Modified	Modified in 5.0 or 5.1	Impacted by
EntityNotFoundException	Unchanged				
Entry	Unchanged				
ErrorParams	Unchanged				
Exception	Unchanged				
Files	Unchanged				
FormData	Unchanged				
FormProperty	Unchanged				
FormPropertyFilters	Unchanged				
FoundAttribute	Unchanged				
FoundComment	Unchanged				

v4.6 Rest Model	Unchanged / Removed / Modified	Method	Added / Removed / Modified	Modified in 5.0 or 5.1	Impacted by
FoundElement	Modified	getTags()	Added	5.1	Tags
FoundElement	Modified	withTags()	Added	5.1	Tags
FoundPart	Unchanged				
Gender	Unchanged				
Group	Unchanged				
GroupCollection	Unchanged				
GroupReference	Unchanged				
IllegalArgumentException	Unchanged				
ImpactRelationType	Unchanged				
InstantMessagingAccount	Unchanged				

v4.6 Rest Model	Unchanged / Removed / Modified	Method	Added / Removed / Modified	Modified in 5.0 or 5.1	Impacted by
InstantMessagingAccountCollection	Unchanged				
InstantMessagingAccountType	Unchanged				
Job	Unchanged				
JobPagedResult	Unchanged				
Jobs	Unchanged				
LdapUserMappingConfig	Unchanged				
LicenseKeyException	Unchanged				
MapEntries	Unchanged				
Mapping	Unchanged				
Mappings	Unchanged				

v4.6 Rest Model	Unchanged / Removed / Modified	Method	Added / Removed / Modified	Modified in 5.0 or 5.1	Impacted by
MemberCompleteReference	Unchanged				
MemberCompleteReferences	Unchanged				
MemberReference	Unchanged				
MemberReferences	Unchanged				
MetricGroup	Removed			5.1	Assignment
MetricGroups	Removed			5.1	Assignment
MultiDropdownValue	Unchanged				
MultiValueListAttribute	Unchanged				
MultiValueListAttributeReference	Unchanged				
NamingRule	Removed			5.1	Naming Rule

v4.6 Rest Model	Unchanged / Removed / Modified	Method	Added / Removed / Modified	Modified in 5.0 or 5.1	Impacted by
NamingRuleReference	Removed			5.1	Naming Rule
NamingRules	Removed			5.1	Naming Rule
NotFoundException	Removed			5.0	
Noun	Unchanged				
Nouns	Unchanged				
NumericAttribute	Unchanged				
NumericAttributeReference	Unchanged				
ObjectFactory	Modified	createAssignmentGroup()	Removed	5.1	Assignment
ObjectFactory	Modified	createAssignmentGroupReference() ()	Removed	5.1	Assignment

v4.6 Rest Model	Unchanged / Removed / Modified	Method	Added / Removed / Modified	Modified in 5.0 or 5.1	Impacted by
ObjectFactory	Modified	createAssignmentGroups	Removed	5.1	Assignment
ObjectFactory	Modified	createAttributeTypeContainer	Removed	5.1	Assignment
ObjectFactory	Modified	createAttributeTypeGroup	Removed	5.1	Assignment
ObjectFactory	Modified	createBinaryFactTypeReference	Removed	5.1	Representation
ObjectFactory	Modified	createBinaryFactTypeReferences	Removed	5.1	Representation
ObjectFactory	Modified	createConceptTypeContainer	Removed	5.1	Assignment
ObjectFactory	Modified	createConceptTypeGroup	Removed	5.1	Assignment
PagedResult	Unchanged				
PagingProperties	Unchanged				
Permissions	Unchanged				

v4.6 Rest Model	Unchanged / Removed / Modified	Method	Added / Removed / Modified	Modified in 5.0 or 5.1	Impacted by
Phone	Unchanged				
PhoneCollection	Unchanged				
PhoneType	Unchanged				
ProcessInstance	Unchanged				
ProcessInstancePagedResult	Unchanged				
ProcessInstnaces	Unchanged				
ProductModuleType	Unchanged				
Relation	Unchanged				
RelationReference	Modified	getStatusReference	Removed	5.1	Representation
RelationReference	Modified	setStatusReference	Removed	5.1	Representation

v4.6 Rest Model	Unchanged / Removed / Modified	Method	Added / Removed / Modified	Modified in 5.0 or 5.1	Impacted by
RelationReferences	Unchanged				
Relations	Unchanged				
RelationTrace	Unchanged				
RelationTraceEntry	Unchanged				
RelationTraceResource	Unchanged				
RelationTraceResourceEntries	Unchanged				
RelationTraceResourceEntry	Unchanged				
RelationTraceResources	Unchanged				
RelChange	Unchanged				
Representation	Unchanged				

v4.6 Rest Model	Unchanged / Removed / Modified	Method	Added / Removed / Modified	Modified in 5.0 or 5.1	Impacted by
RepresentationContainer	Removed			5.1	Assignment
RepresentationContainerSet	Removed			5.1	Assignment
RepresentationReference	Unchanged				
RepresentationReferences	Unchanged				
Representations	Unchanged				
Resource	Unchanged				
Resources	Unchanged				
ResourceTypeType	Modified	AC	Removed	5.1	Assignment
ResourceTypeType	Modified	AG	Removed	5.1	Assignment
ResourceTypeType	Modified	ARC	Removed	5.1	Assignment

v4.6 Rest Model	Unchanged / Removed / Modified	Method	Added / Removed / Modified	Modified in 5.0 or 5.1	Impacted by
ResourceTypeType	Modified	CC	Removed	5.1	Assignment
ResourceTypeType	Modified	CG	Removed	5.1	Assignment
ResourceTypeType	Modified	CRTG	Removed	5.1	Assignment
ResourceTypeType	Modified	MG	Removed	5.1	Assignment
ResourceTypeType	Modified	SC	Removed	5.1	Assignment
ResourceTypeType	Modified	SG	Removed	5.1	Assignment
ResourceTypeType	Modified	SS	Removed	5.1	Snapshots
ResourceTypeType	Modified	SSC	Removed	5.1	Snapshots
ResourceTypeType	Modified	VG	Removed	5.1	Assignment
Role	Unchanged				

v4.6 Rest Model	Unchanged / Removed / Modified	Method	Added / Removed / Modified	Modified in 5.0 or 5.1	Impacted by
RoleReference	Unchanged				
RoleReferences	Unchanged				
ScriptAttribute	Unchanged				
ScriptAttributeReference	Unchanged				
SearchResult	Unchanged				
SearchResultItem	Removed			5.0	
SearchResultItems	Removed			5.0	
SimpleTerm	Unchanged				
SimpleTerms	Unchanged				
SingleValueListAttribute	Unchanged				

v4.6 Rest Model	Unchanged / Removed / Modified	Method	Added / Removed / Modified	Modified in 5.0 or 5.1	Impacted by
SingleValueListAttributeReference	Unchanged				
Snapshot	Removed			5.1	Snapshots
SnapshotConfiguration	Removed			5.1	Snapshots
SnapshotConfigurationReference	Removed			5.1	Snapshots
SnapshotConfigurationReferences	Removed			5.1	Snapshots
SnapshotReference	Removed			5.1	Snapshots
SnapshotReferences	Removed			5.1	Snapshots
Snapshots	Removed			5.1	Snapshots
StartFormData	Unchanged				
StartWorkflowResponse	Unchanged				

v4.6 Rest Model	Unchanged / Removed / Modified	Method	Added / Removed / Modified	Modified in 5.0 or 5.1	Impacted by
StartWorkflowResponseEntry	Unchanged				
StatisticConfiguration	Unchanged				
StatisticConfigurations	Unchanged				
StatusContainer	Removed			5.1	Assignment
StatusGroup	Removed			5.1	Assignment
StringAttribute	Unchanged				
StringAttributeReference	Unchanged				
StringCollection	Unchanged				
SyncActionType	Unchanged				
Task	Unchanged				

v4.6 Rest Model	Unchanged / Removed / Modified	Method	Added / Removed / Modified	Modified in 5.0 or 5.1	Impacted by
TaskFormData	Unchanged				
TaskPagedResult	Unchanged				
TaskResponseEntry	Unchanged				
Tasks	Unchanged				
Term	Modified	getBinaryFactTypeReferences()	Removed	5.1	Fact Type
Term	Modified	setBinaryFactTypeReferences	Removed	5.1	Fact Type
Term	Modified	withBinaryFactTypeReferences	Removed	5.1	Fact Type
TermPagedResult	Unchanged				
TermReference	Modified	getDescription()	Added	5.1	
TermReference	Modified	setDescription()	Added	5.1	

v4.6 Rest Model	Unchanged / Removed / Modified	Method	Added / Removed / Modified	Modified in 5.0 or 5.1	Impacted by
TermReferences	Unchanged				
Terms	Unchanged				
TermValidationInfo	Unchanged				
TermValidationResultReference	Unchanged				
TermValidationResultReferences	Unchanged				
TraceabilityGroup	Removed			5.1	Assignment
TraceabilityGroups	Removed			5.1	Assignment
User	Unchanged				
UserCollection	Unchanged				
UserReference	Unchanged				

v4.6 Rest Model	Unchanged / Removed / Modified	Method	Added / Removed / Modified	Modified in 5.0 or 5.1	Impacted by
UserSmallReference	Unchanged				
ValidationGroup	Removed			5.1	Assignment
ValidationGroups	Removed			5.1	Assignment
ValidationRuleContainer	Removed			5.1	Assignment
View	Unchanged				
ViewConflict	Unchanged				
ViewConflicts	Unchanged				
ViewReference	Modified	getType()	Added	5.0	Views
ViewReference	Modified	isIsWorkingView()	Added	5.0	Views
ViewReference	Modified	setIsWorkingView	Added	5.0	Views

v4.6 Rest Model	Unchanged / Removed / Modified	Method	Added / Removed / Modified	Modified in 5.0 or 5.1	Impacted by
ViewReference	Modified	setType()	Added	5.0	Views
ViewReference	Modified	withIsWorkingView	Added	5.0	Views
ViewReference	Modified	withType()	Added	5.0	Views
ViewReferences	Unchanged				
ViewRightReference	Unchanged				
ViewRightReferences	Unchanged				
ViewRule	Unchanged				
ViewRuleSet	Unchanged				
ViewTypeType	Added			5.0	Views
Vocabularies	Unchanged				

v4.6 Rest Model	Unchanged / Removed / Modified	Method	Added / Removed / Modified	Modified in 5.0 or 5.1	Impacted by
Vocabulary	Modified	getBinaryFactTypeReferences()	Removed	5.1	Fact Type
Vocabulary	Modified	setBinrayFactTypeReferences()	Removed	5.1	Fact Type
Vocabulary	Modified	withBinrayFactTypeReferences	Removed	5.1	Fact Type
Vocabulary	Modified	withNamingRuleReference()	Removed	5.0	Naming Rule
VocabularyReference	Modified	setNamingRuleReference()	Removed	5.0	Naming Rule
VocabularyReference	Modified	getNamingRuleReference()	Removed	5.0	Naming Rule
VocabularyReference	Modified	withNamingRuleReference()	Removed	5.0	Naming Rule
VocabularyReferences	Unchanged				
Website	Unchanged				
WebsiteCollection	Unchanged				

v4.6 Rest Model	Unchanged / Removed / Modified	Method	Added / Removed / Modified	Modified in 5.0 or 5.1	Impacted by
WebsiteType	Unchanged				
WorkflowDefinition	Modified	isGlobalCreate()	Added	5.0	Global Create
WorkflowDefinition	Modified	setGlobalCreate()	Added	5.0	Global Create
WorkflowDefinition	Modified	withBinaryFactTypeReferences()	Removed	5.1	Fact Type
WorkflowDefinition	Modified	withGlobalCreate()	Added	5.0	Global Create
WorkflowDefinitionReference	Unchanged				
WorkflowDefinitionReferences	Unchanged				
WorkflowDefinitions	Unchanged				
WorkflowEventTypes	Unchanged				
WorkflowEventTypeType	Unchanged				

v4.6 Rest Model	Unchanged / Removed / Modified	Method	Added / Removed / Modified	Modified in 5.0 or 5.1	Impacted by
WorkflowExclusivity	Unchanged				

FAQ on-premises upgrade to 5.8

The FAQ in this section mainly focuses on the upgrade of PostgreSQL to version 11 in your on-premises environments. You can find the FAQ of the PostgreSQL upgrade in your cloud environments on [this page](#).

Why are we upgrading PostgreSQL?

PostgreSQL releases new major versions every year and provides updates for each major version for five years, after which support for fixes ends. Our on-premises Collibra Data Governance Center currently uses PostgreSQL version 10.21, for which support will end on November 10, 2022.

Which on-premises Collibra DGC environments are impacted?

Collibra DGC 5.7.13 is the last version that uses PostgreSQL 10. Collibra DGC 5.8 makes use of PostgreSQL 11.

We do not support PostgreSQL 11 on Collibra DGC 5.7.13 or older. If you choose to keep Collibra DGC 5.7.13 or older, your environment will remain operational but you will be using an unsupported version of PostgreSQL.

What is the timeline for the upgrade to PostgreSQL 11?

PostgreSQL 11 is part of Collibra Data Governance Center 5.8.1 which will be generally available on October 21, 2022.

What is the impact on my on-premises Collibra DGC environment on November 10, 2022?

None. The PostgreSQL version in your current on-premises environments will still work beyond November 10, 2022 but after this date, there will be no further updates, even for critical security issues. [Upgrade](#) to 5.8.1 to use a supported version PostgreSQL.

Can I migrate my on-premises environment to the cloud?

Yes. You can migrate your on-premises Collibra environment to cloud at any time but keep the following compatibility in mind:

Collibra DGC on -premises version will be migrated to...	Collibra Data Governance Center cloud version
5.7.13	2022.11
5.8.0	2022.12 or newer Version 2022.12 is only available on-demand .

- On-premises environments versions 5.7.13 or older will only be migrated to 2022.11.
- On-premises environment version 5.8 can only be migrated to 2022.12 ([on-demand version](#)) or newer.

What is the feature compatibility between cloud and on-premises environments?

The on-premises Collibra Data Governance Center 5.7.13 is feature compatible with the cloud Collibra Data Governance Center 2022.05. The on-premises version 5.8.0 is identical to 5.7.13 but includes extra bug fixes.

Keep in mind that version 5.7.13 runs with PostgreSQL 10 and that version 5.8.0 runs with PostgreSQL 11.

For the feature compatibility of older on-premises versions, go to the [compatibility page](#).

Can I restore backups from cloud environment in my on-premises environment?

Yes, but you can only restore a backup of a cloud environment version 2022.05 or older on an on-premises environment version 5.7.13 or 5.8.0.

Restoring a backup of a 2022.06 or newer version on an on-premises environment 5.7.13 or 5.8.0 is not supported.

For the backup compatibility of older versions, go to the [compatibility page](#).

Appendix A - Plain-text attributes

When you upgrade to 5.7 or newer, characteristics of some Catalog-related assets are converted from rich-text format to plain-text format.

The following table contains the list of characteristics with their corresponding unique identifiers:

Name	Unique identifier
Original name	00000000-0000-0000-0001-000500000032
Location	00000000-0000-0000-0000-000000000203
Technical Data Type	00000000-0000-0000-0000-000000000219
Schema name	00000000-0000-0000-0000-000000000226
File location	00000000-0000-0000-0001-000500000004
Table Type	00000000-0000-0000-0001-000500000008
Primary Key Name	00000000-0000-0000-0001-000500000016
Minimum Value	00000000-0000-0000-0001-000500000040
Maximum Value	00000000-0000-0000-0001-000500000041
Date and/or Time Pattern	00000000-0000-0000-0001-000500000044
Mode	00000000-0000-0000-0001-000500000048
1st Percentile	00000000-0000-0000-0001-000500000049
5th Percentile	00000000-0000-0000-0001-000500000050
1st Decile	00000000-0000-0000-0001-000500000051

Name	Unique identifier
1st Quartile	00000000-0000-0000-0001-000500000052
Median	00000000-0000-0000-0001-000500000053
3rd Quartile	00000000-0000-0000-0001-000500000054
Category	00000000-0000-0000-0001-000500000046
9th Decile	00000000-0000-0000-0001-000500000055
95th Percentile	00000000-0000-0000-0001-000500000056
99th Percentile	00000000-0000-0000-0001-000500000057
Empty values definition override	00000000-0000-0000-0001-000500000063
File Type	00000000-0000-0000-0001-002500000012
Glue database name	00000000-0000-0000-0001-000500000066
Glue table name	00000000-0000-0000-0001-000500000067